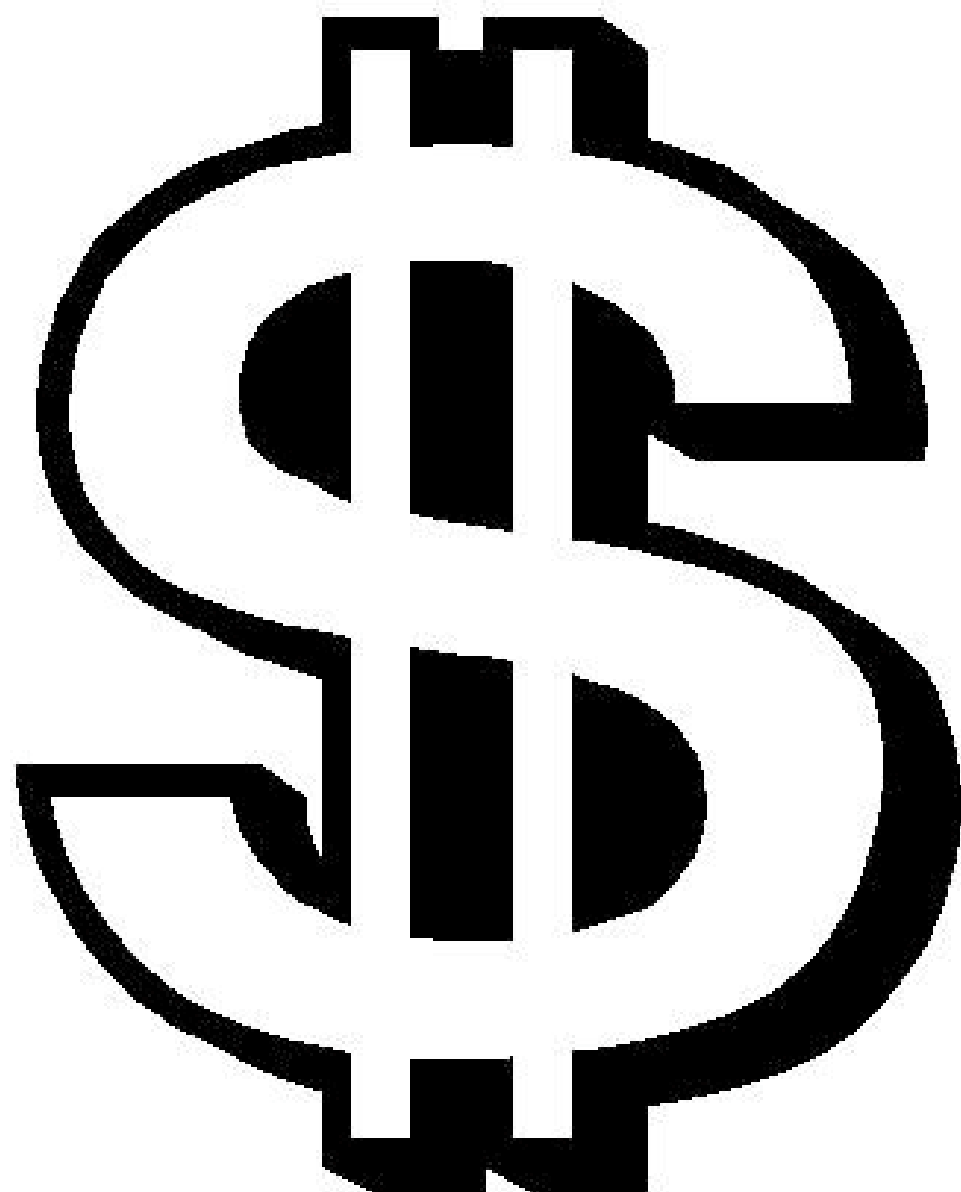


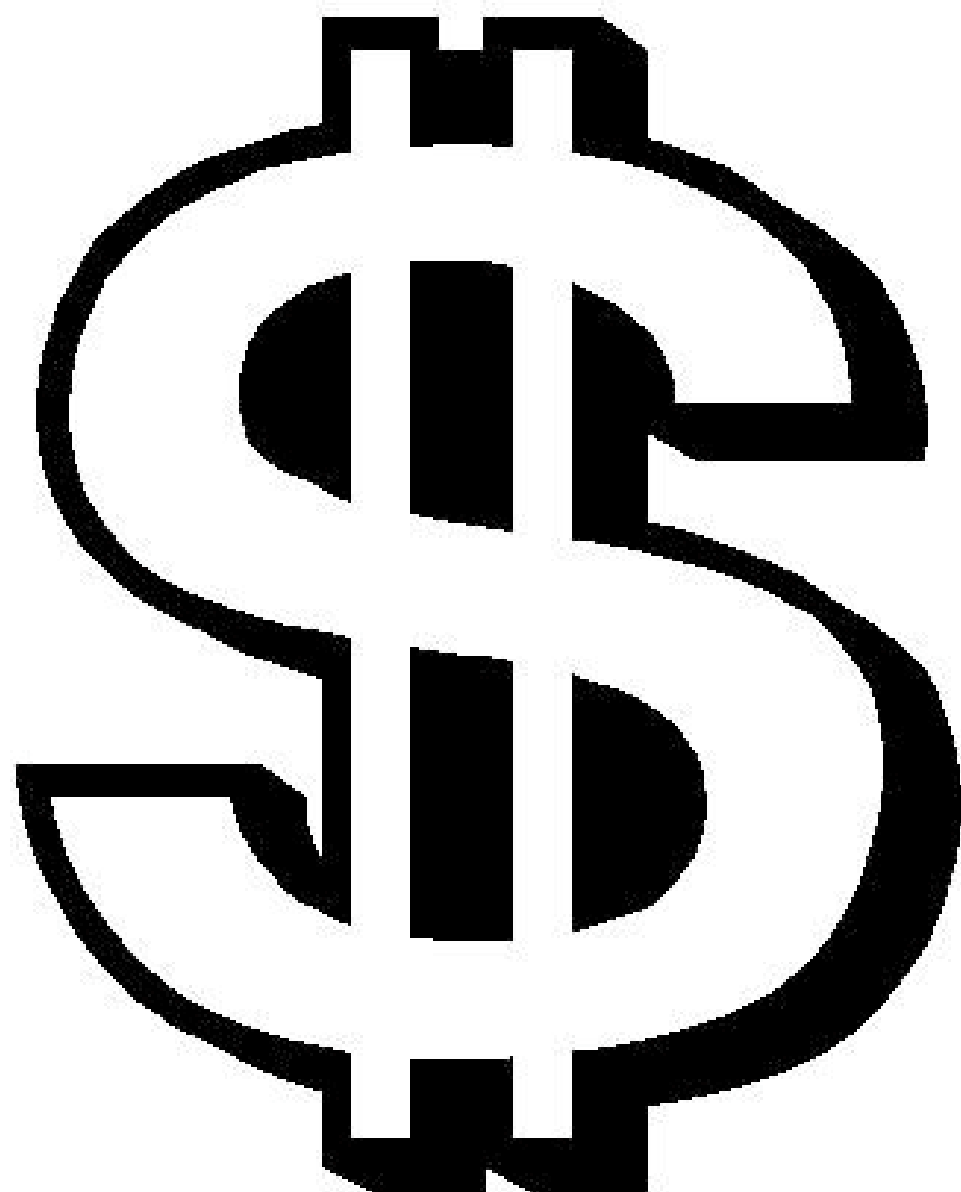
NEUROPLANNING:
NEUROSCIENCE,
CONTEMPORARY ARCHITECTURE
AND THE
HISTORIC URBAN CONTEXT

John Onians
University of East Anglia

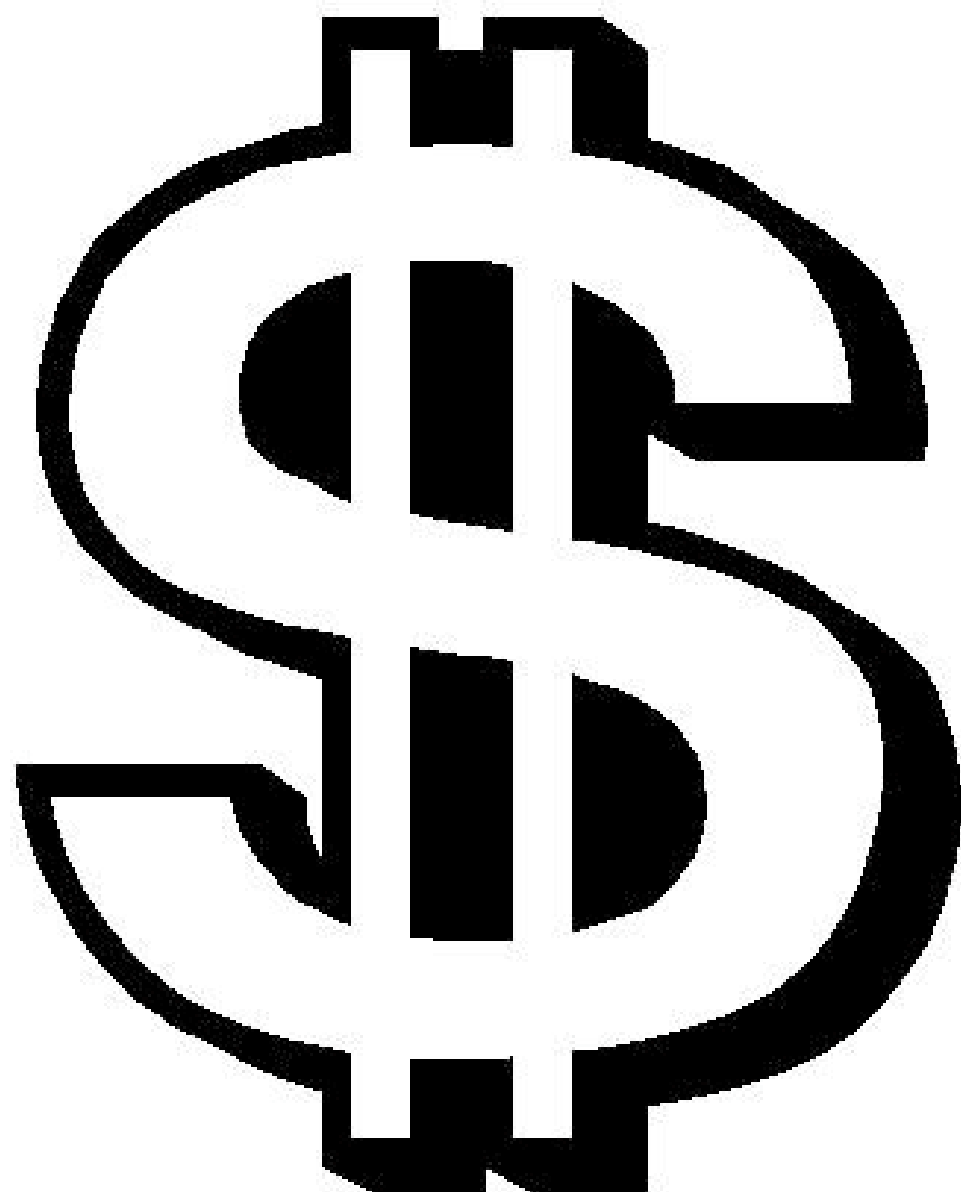


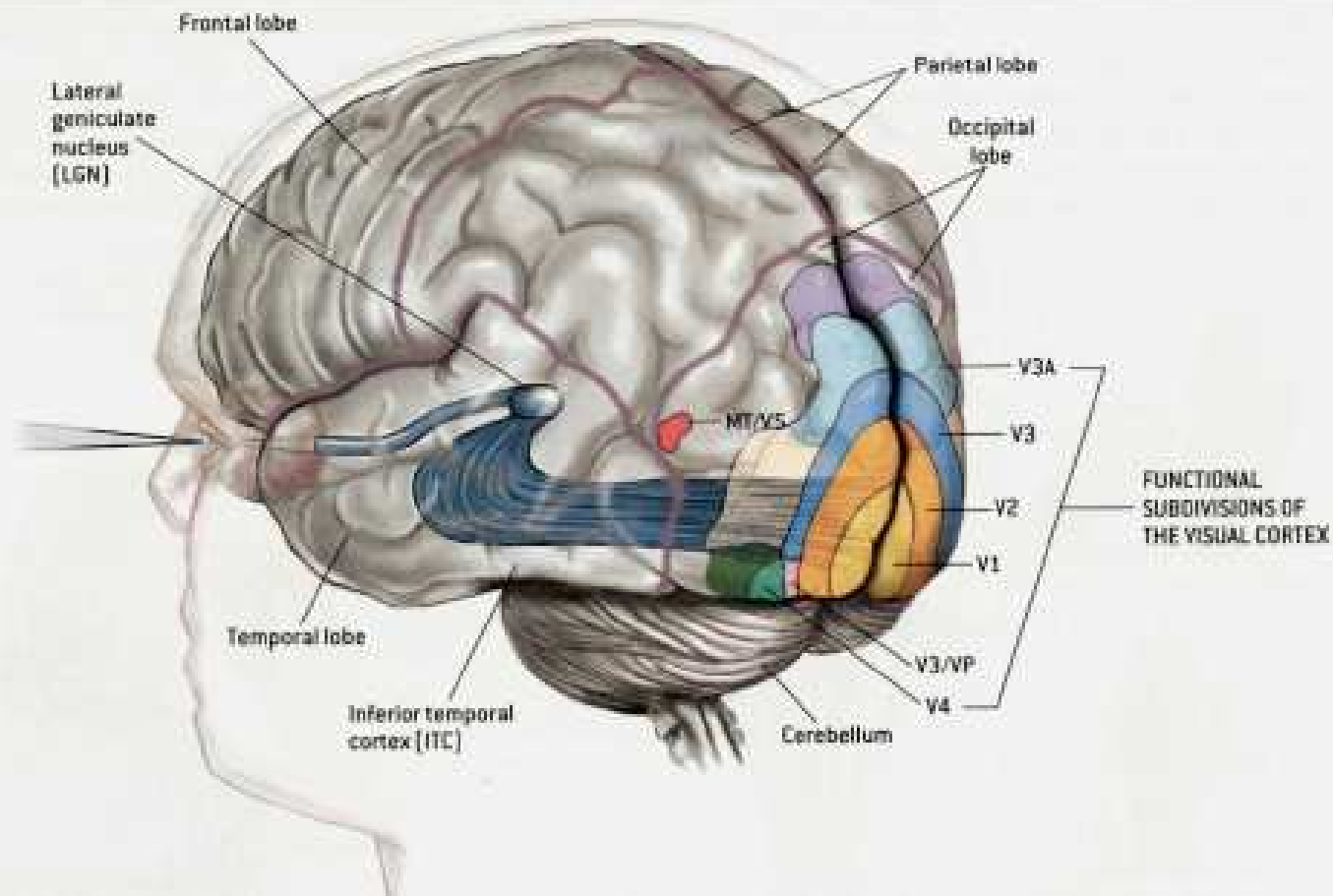




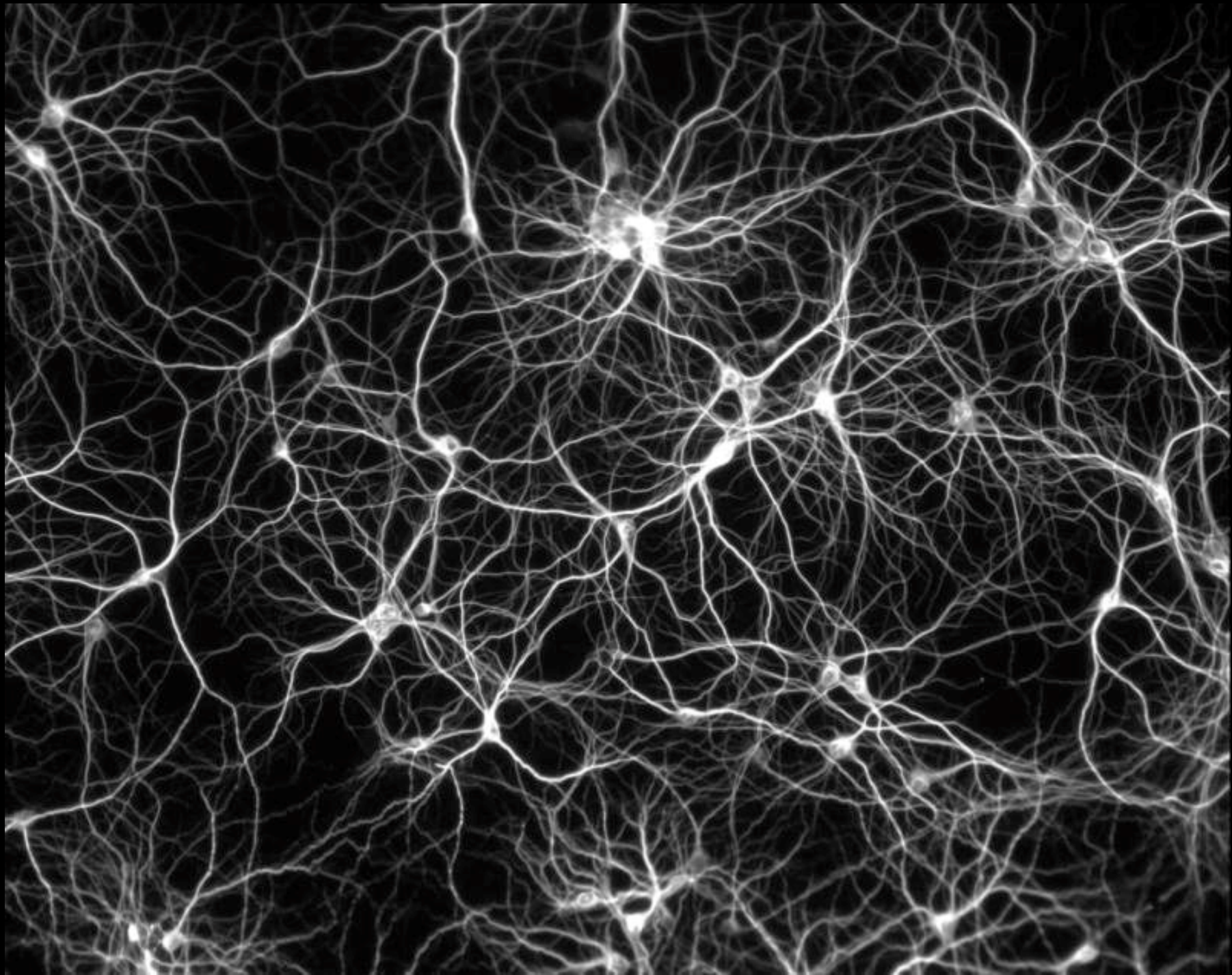




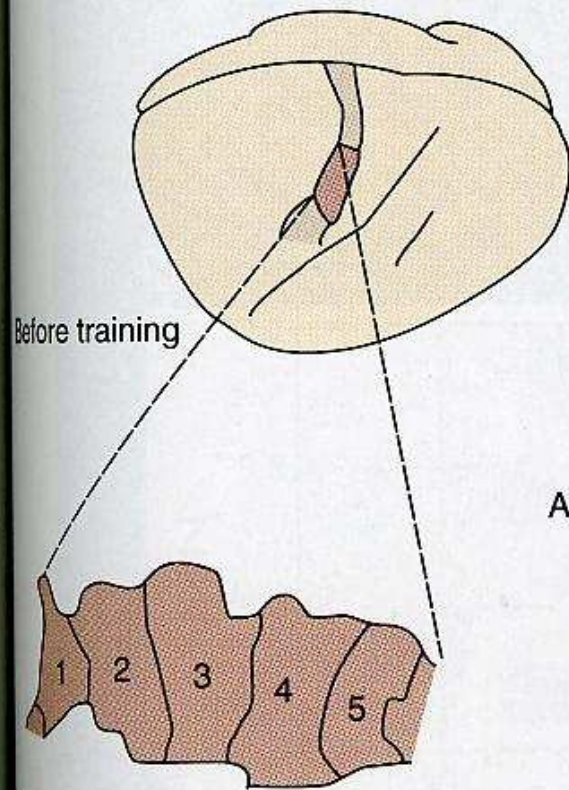




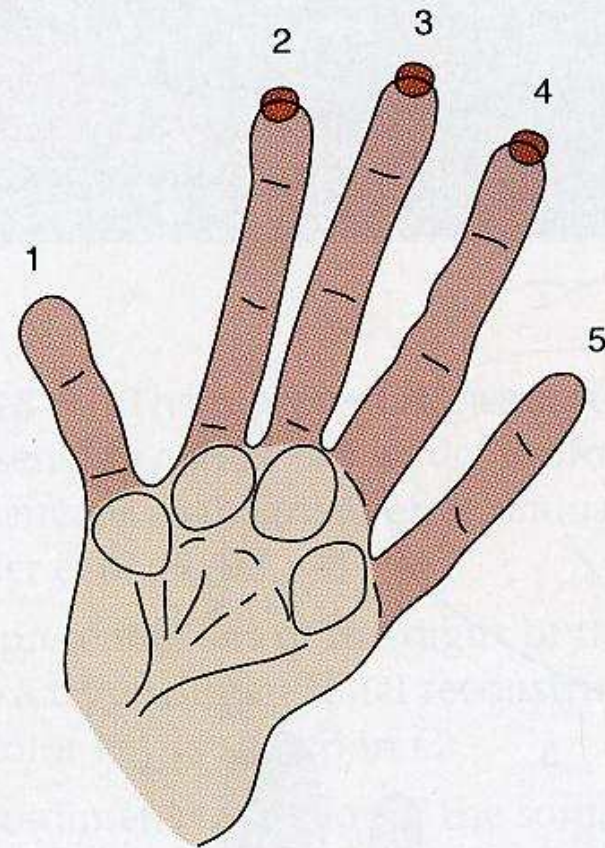
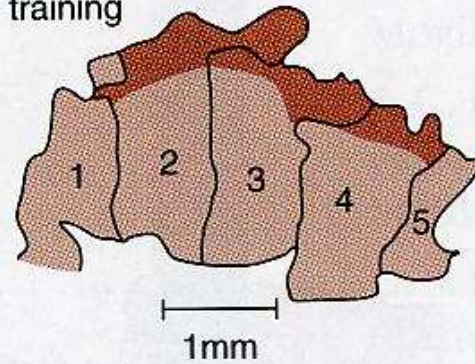


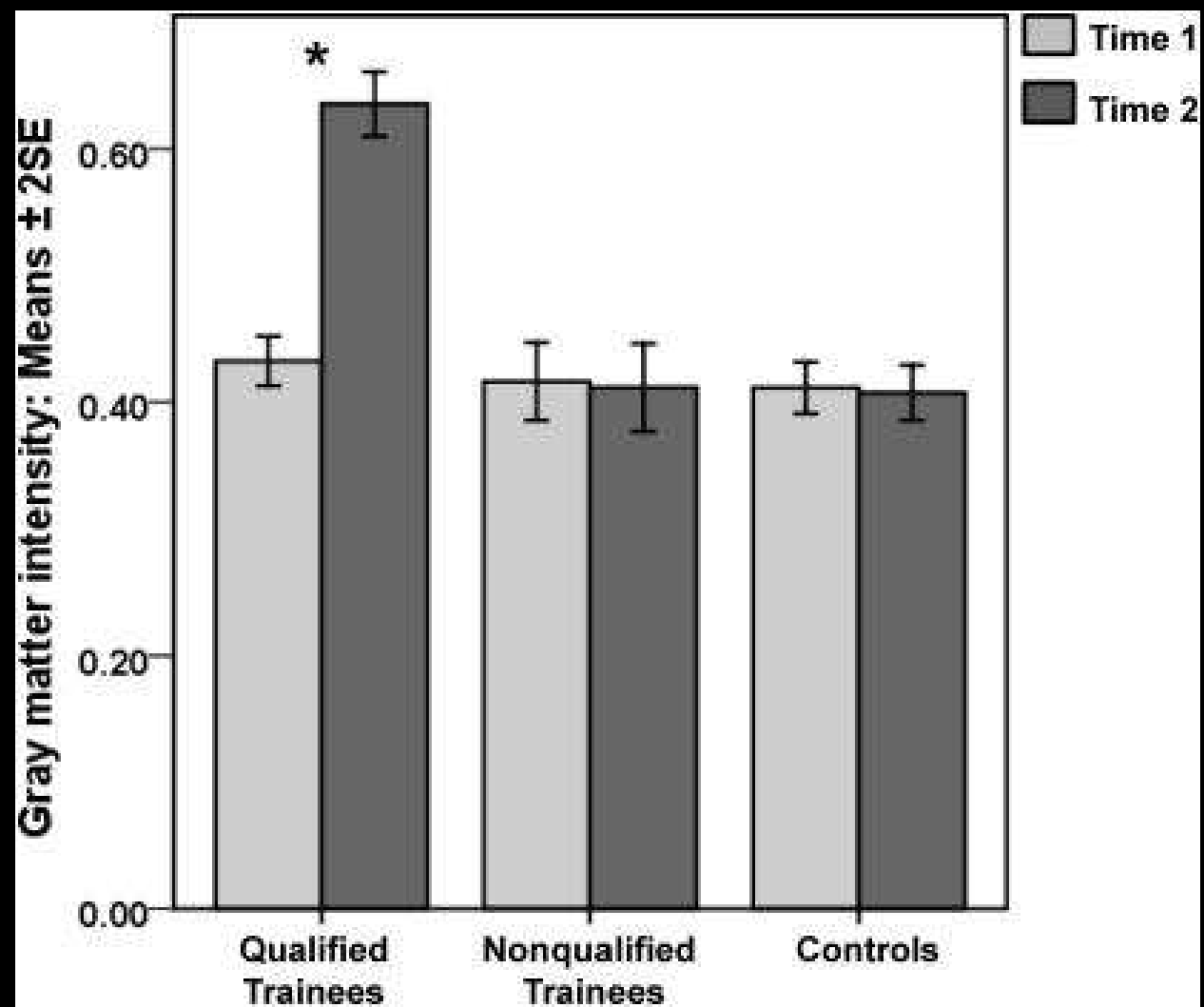


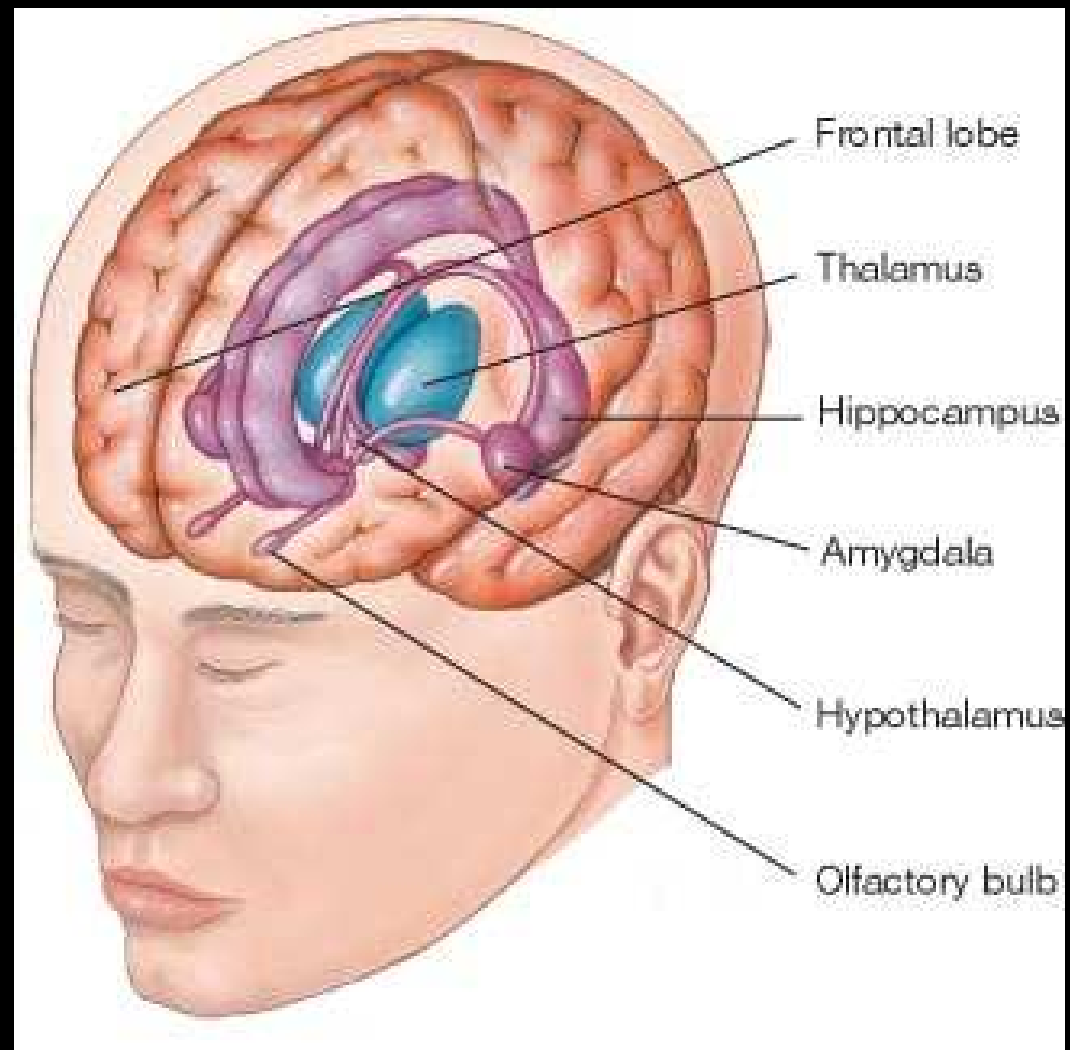
A Cortical representation of fingers

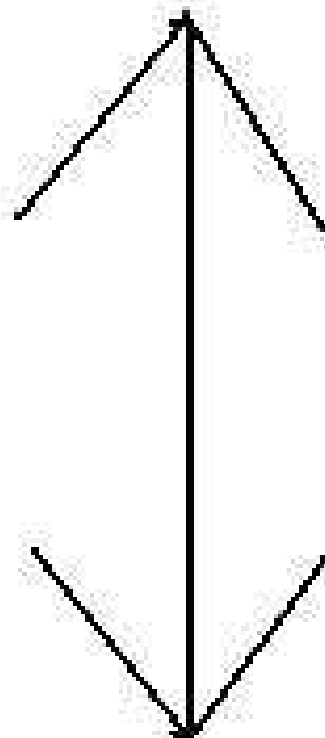
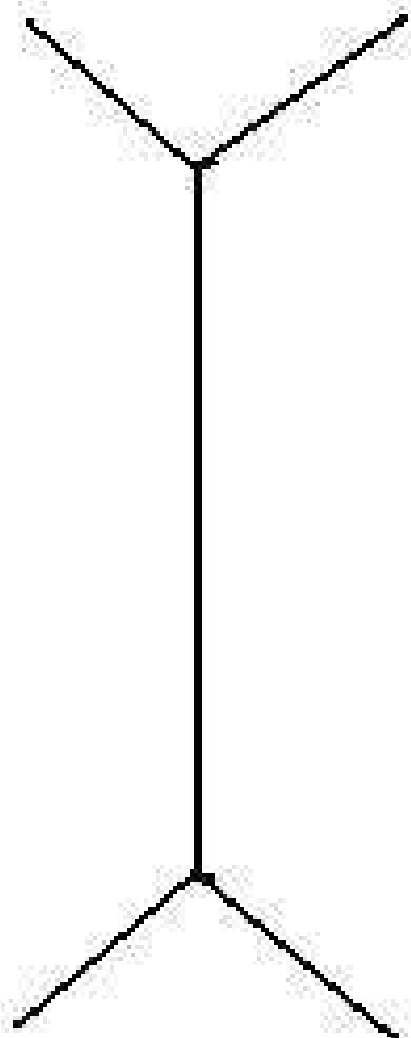


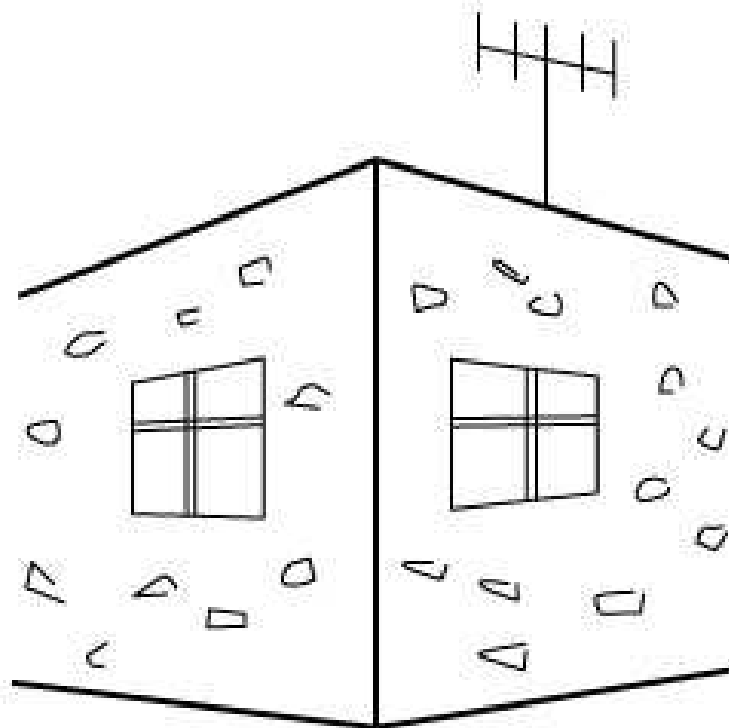
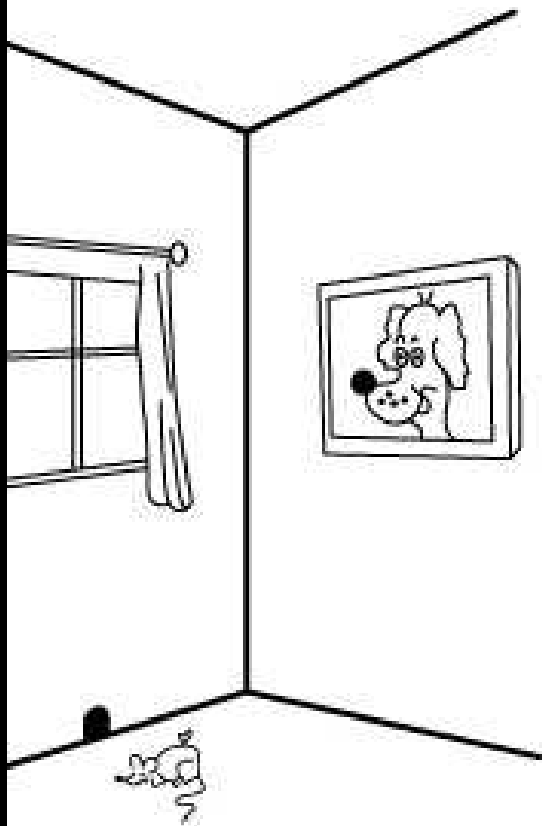
After training

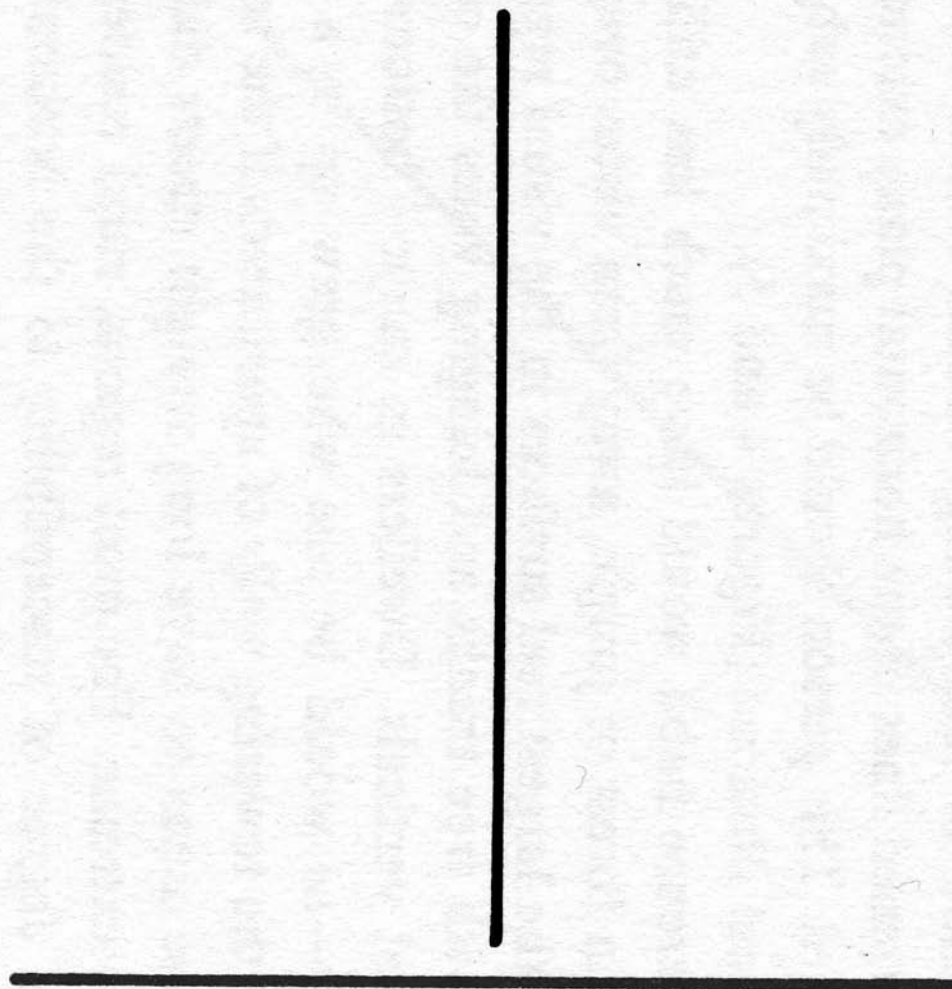






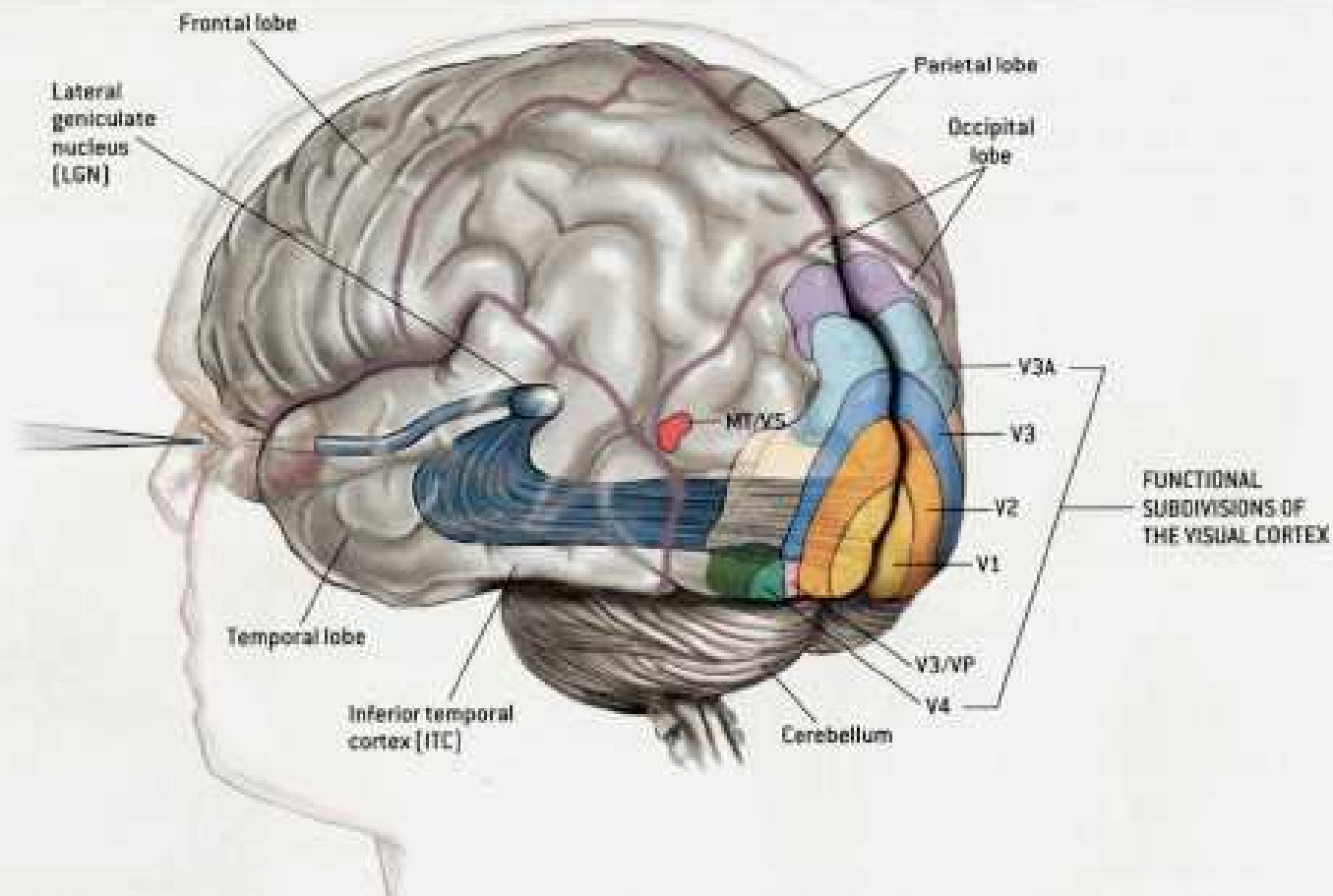


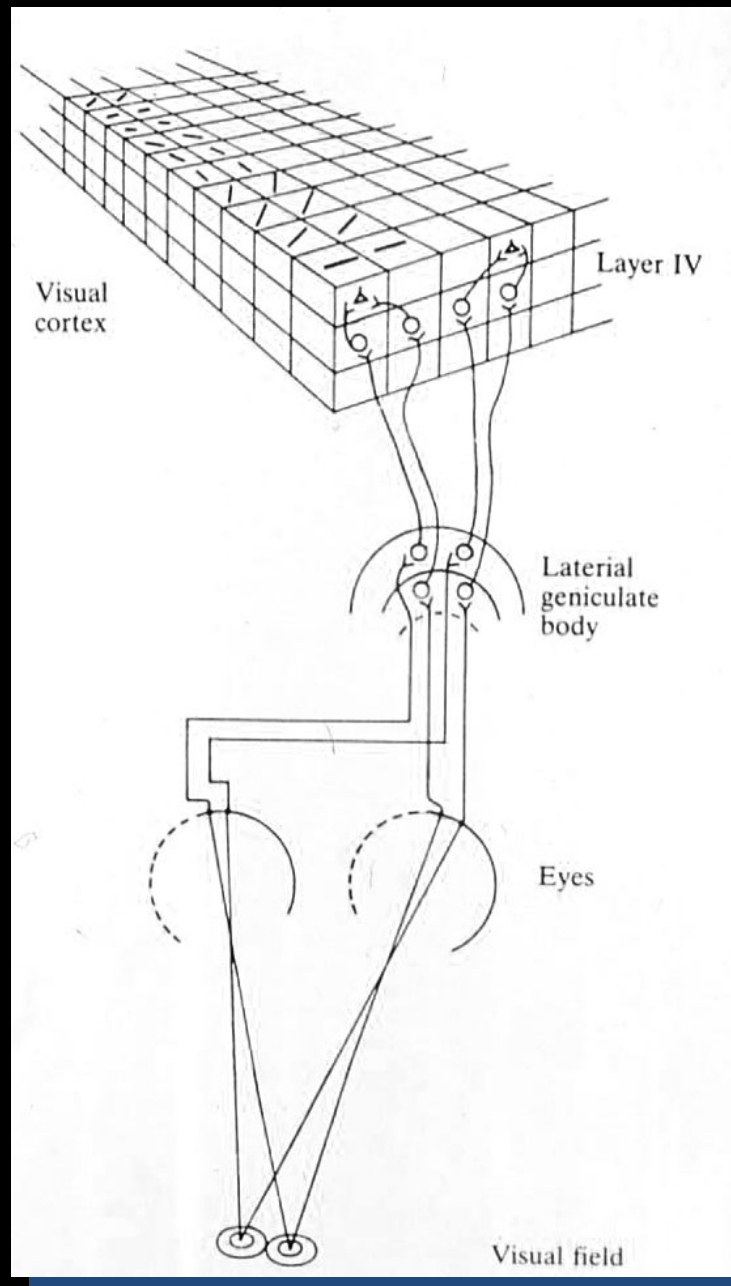




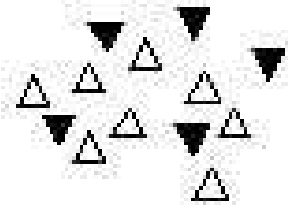




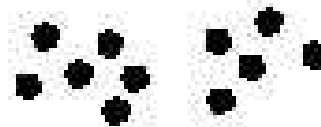




Similarity



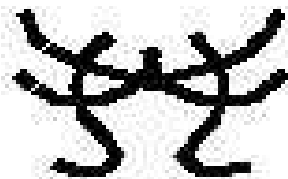
Proximity



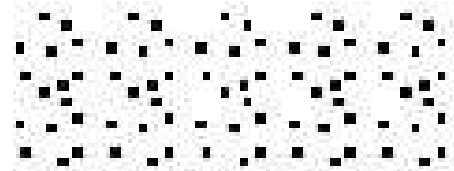
Good continuation



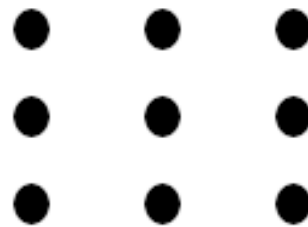
Symmetry



Periodicity

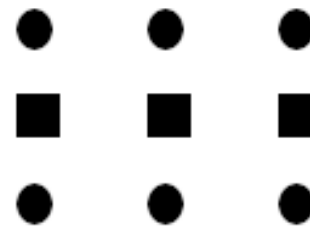


Proximity



(We organize nearby objects together. Thus, you should see columns because the dots in columns are closer than the dots in rows.)

Similarity



(We organize together objects that are similar in shape. Thus, you should see rows instead of columns.)

Good Continuation



(We organize lines to minimize abrupt changes. Thus, you should see the curved line as one, with a straight diagonal line cutting through it.)

Closure



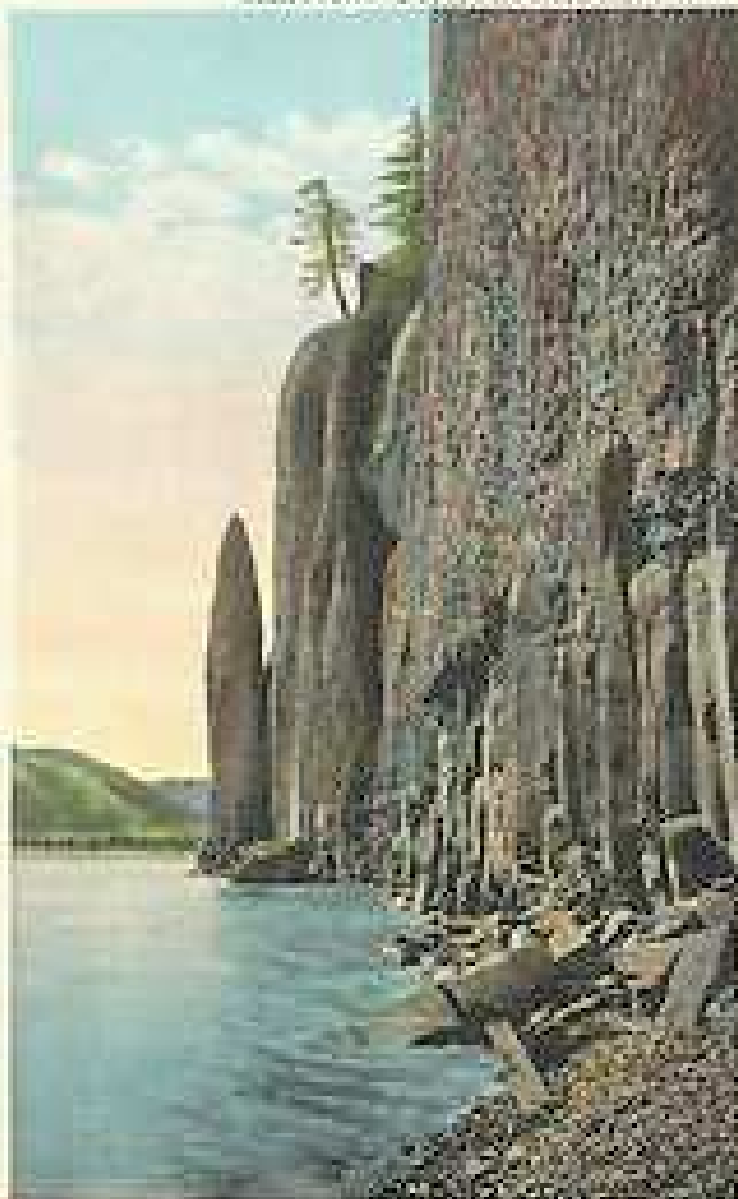
(We organize lines to create whole figures when possible. Thus, you should organize this figure as a square in spite of the gap.)







VIEW FROM THE COLUMBIA RIVER BRIDGE



214. CLIFF HOUSE AND CEDAR ROCK.







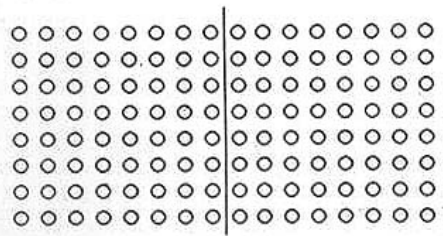




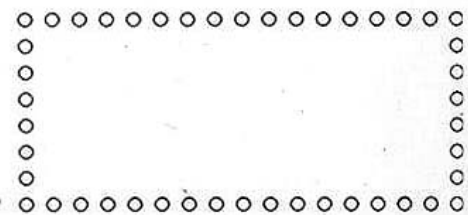




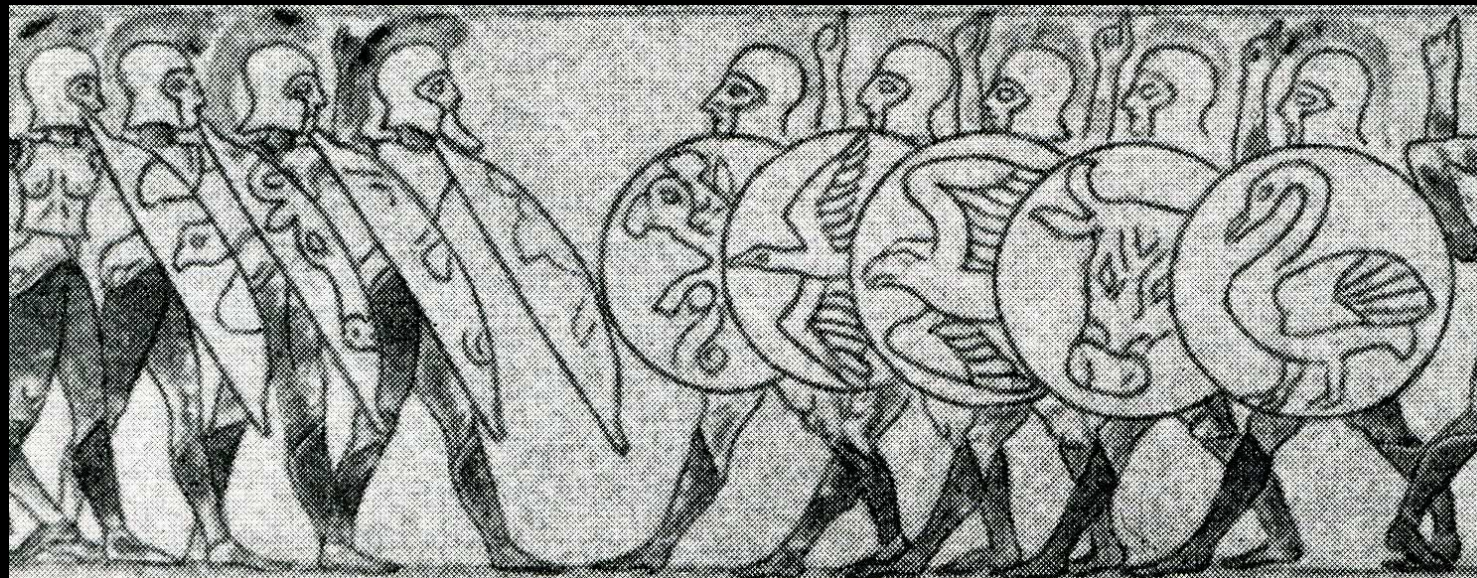




MEN OF
SPARTAN PENTEKOSTYS



EXTERNAL COLUMNS OF
ATHENIAN PARTHENON















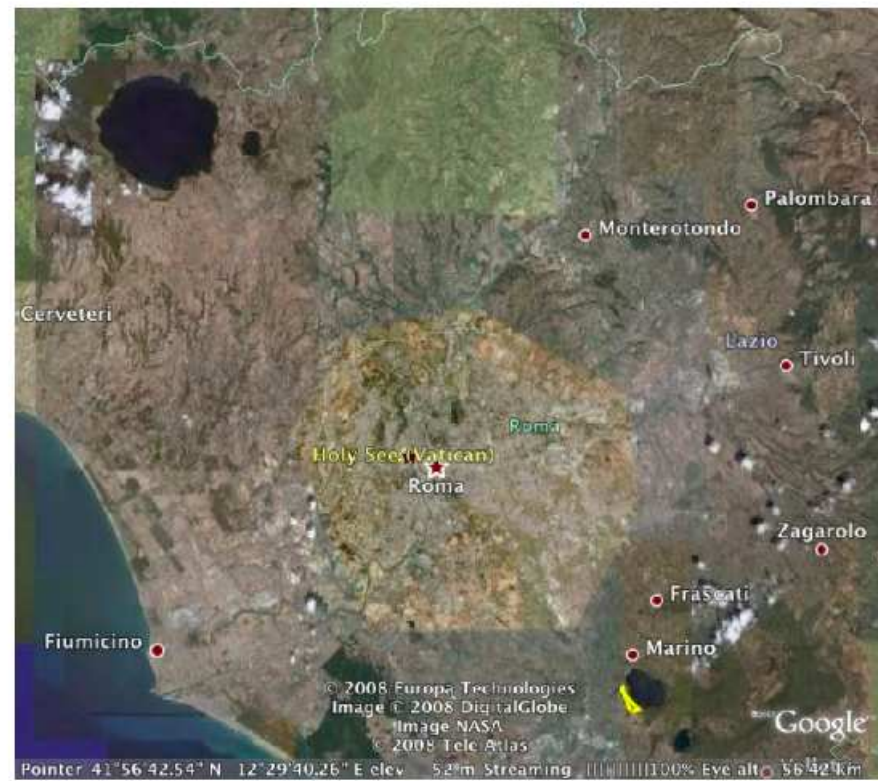








Image © 2008 DigitalGlobe

© 2008 Tele Atlas

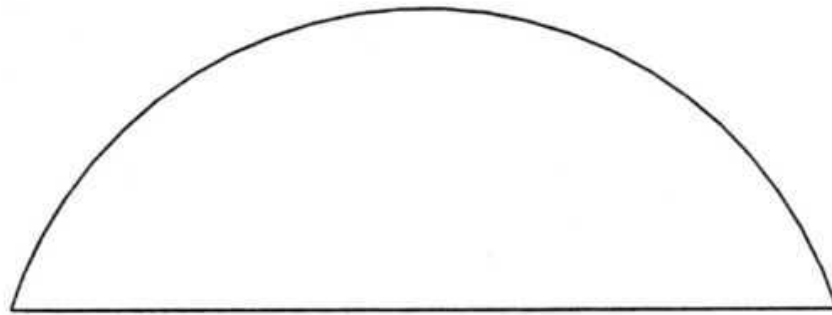
Google

Pointer: 37°57'38.75" N 23°49'10.78" E elev: 902 m Streaming 100% Eye alt: 3.59 km





GREEK TUNIC



ROMAN TOGA



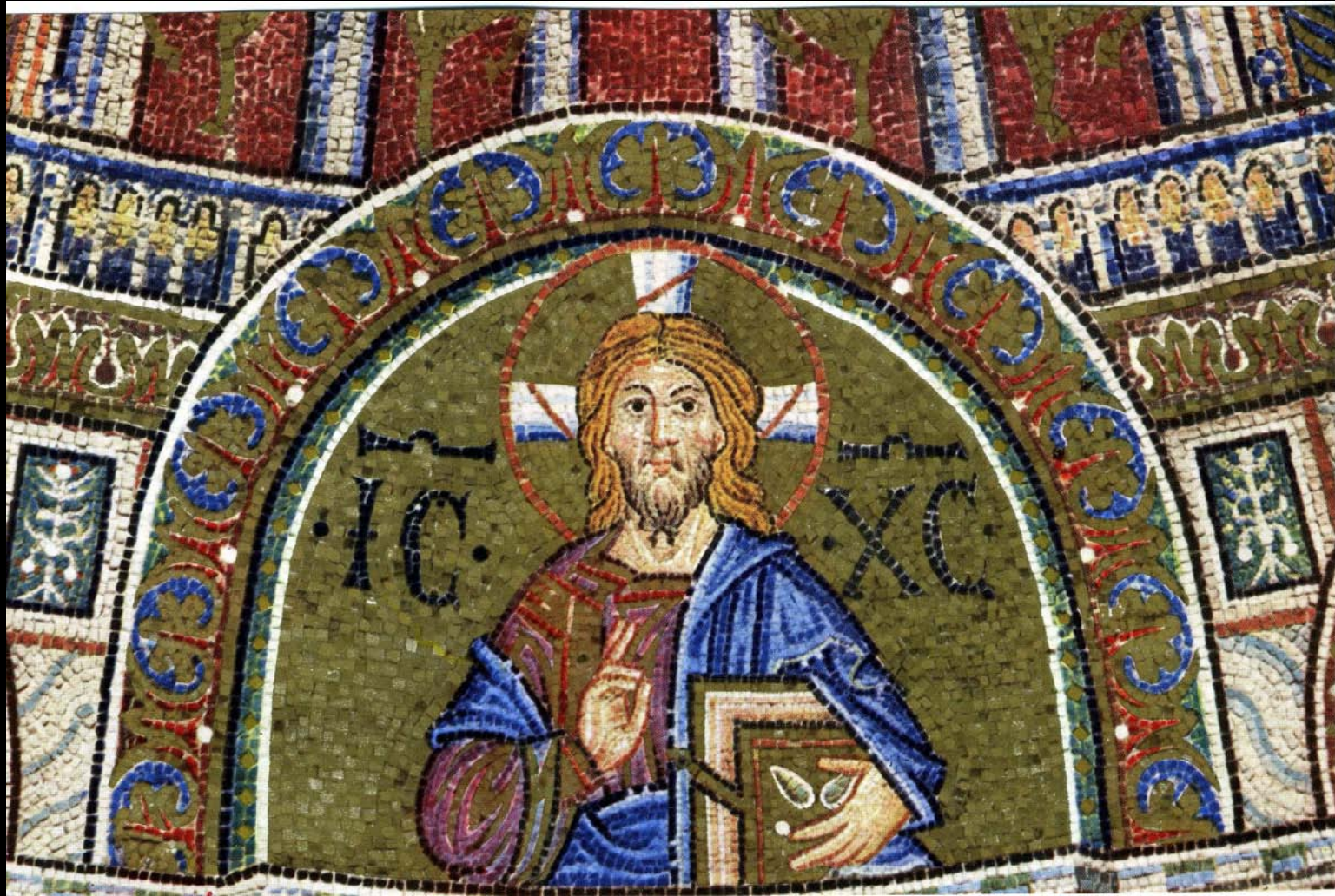






















original unique filename: 20080405-121742_palazzo_bernardo_di_canal_pal_dona_und_pal_coccina_tiepolo_papadopoli.jpg



hosted by www.carto.net

photo © André M. Winter



2029.—A Parallel of some of the principal Towers and Steeples built by Sir Christopher Wren.

- | | | | | | |
|------------------------------|-----------------------------------|-----------------------------------|---|--------------------------|------------------------------------|
| 1, St. Dunstan in the East. | 2, St. Magnus. | 3, St. Benet, Gracechurch-street. | 4, St. Edmund the King, Lombard-street. | 5, St. Margaret Pattens. | 6, Allhallows the Great. |
| 7, St. Mary Abchurch. | 8, St. Michael, Cornhill. | 9, St. Lawrence, Jewry. | 10, St. Benet Fink. | 11, St. Bartholomew. | 12, St. Michael, Queenhithe. |
| 13, St. Michael Royal. | 14, St. Antholin, Watling-street. | 15, St. Stephen, Walbrook. | 16, St. Swithen, Cannon-street. | 17, St. Mary-le-Bow. | 18, Christ Church, Newgate-street. |
| 19, St. Nicholas Cole Abbey. | 20, St. Mildred, Bread-street. | 21, St. Augustin, Watling-street. | 22, St. Mary Somerset. | 23, St. Martin, Ludgate. | 24, St. Andrew by the Wardrobe. |
| 25, St. Bride, Fleet-street. | | | | | |

The scale is expressed by St. Paul's in the background.







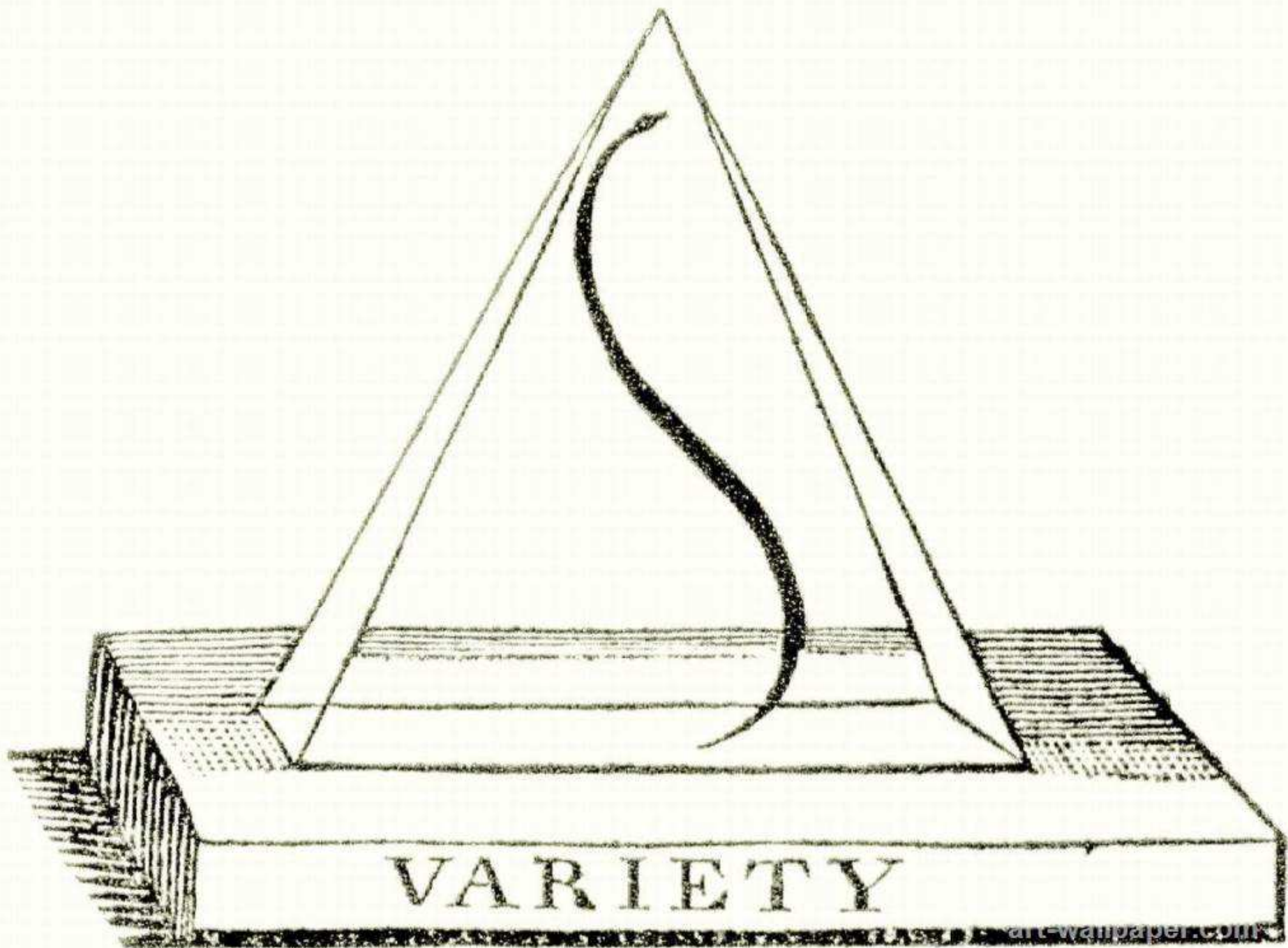


COPYRIGHT, 1879.

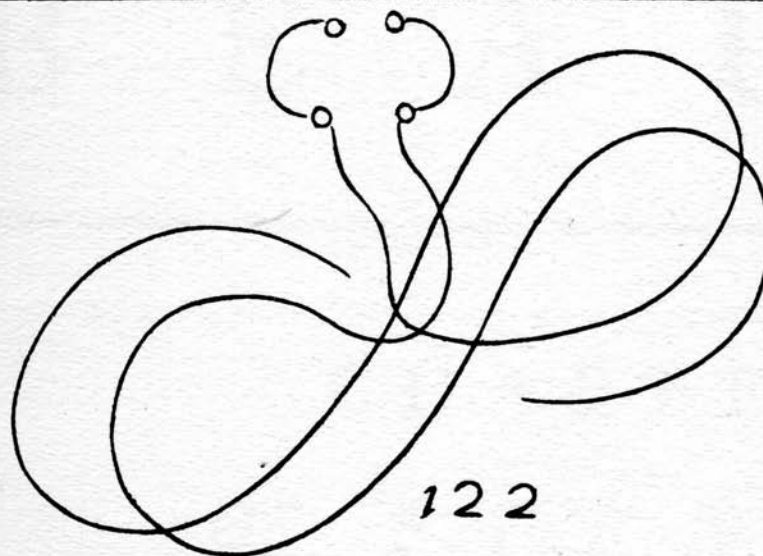
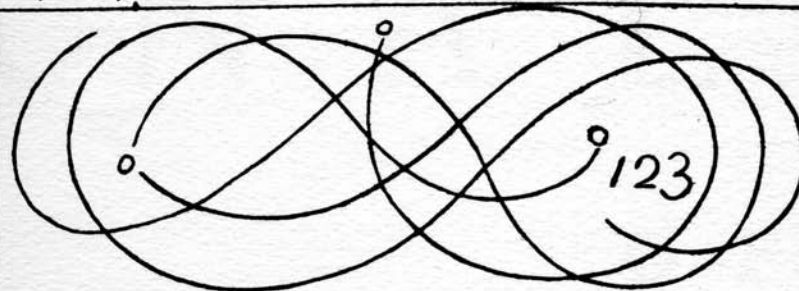
NEW YORK.

FROM THE HARBOR.



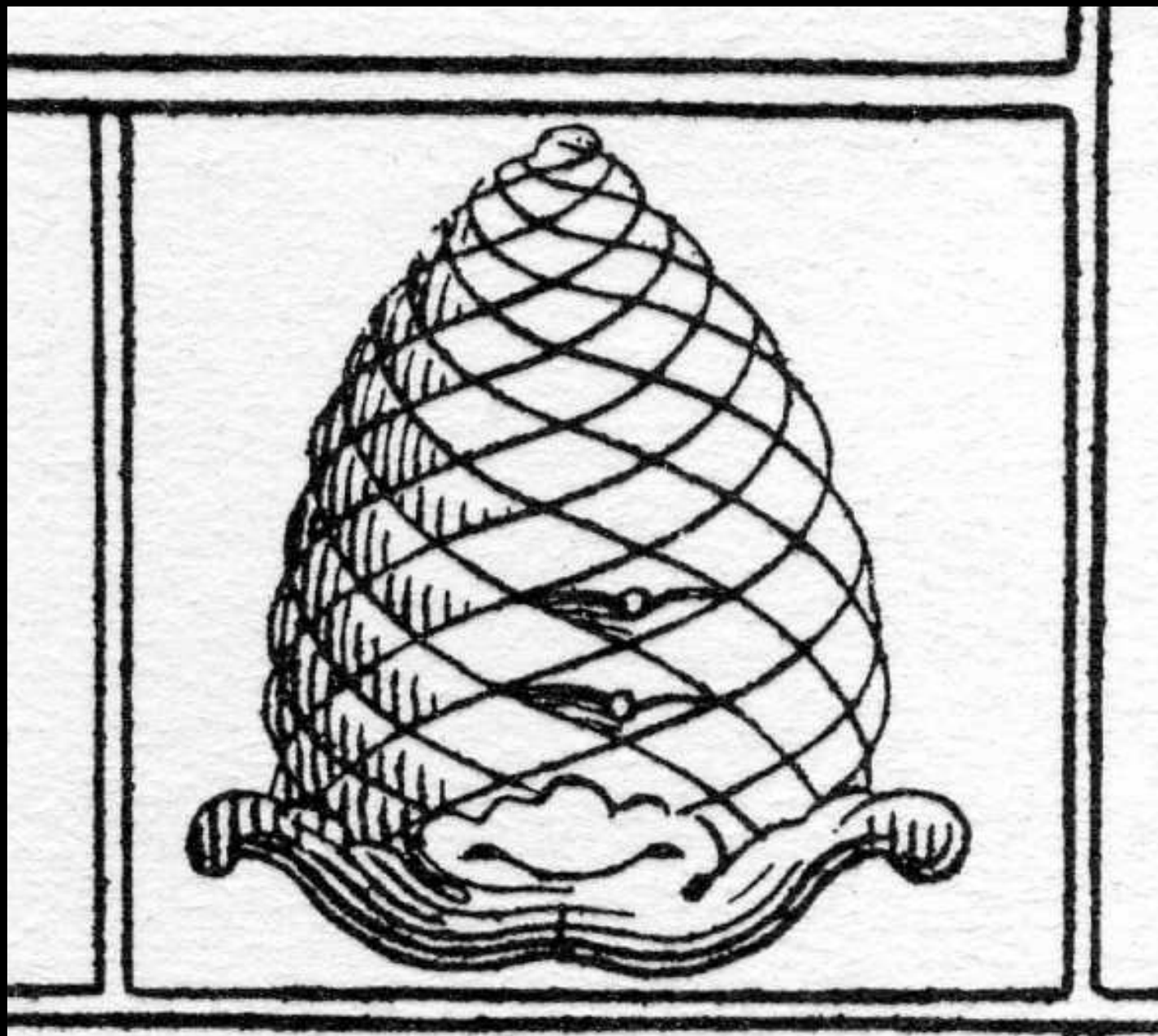


$((\uparrow \diamond \rho \succ \uparrow \times i e))^{71}$

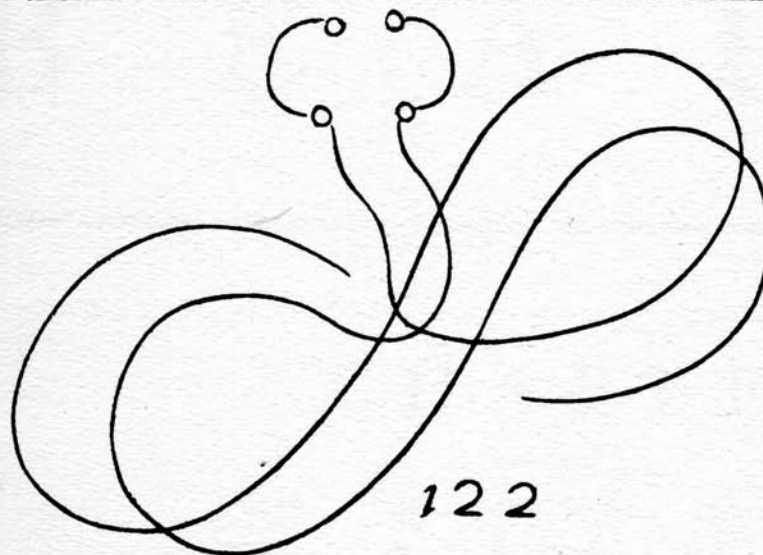
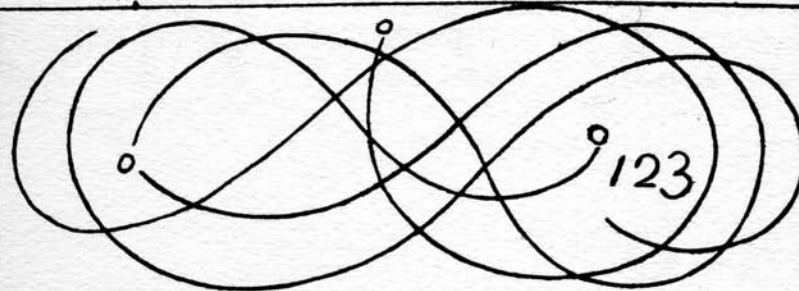


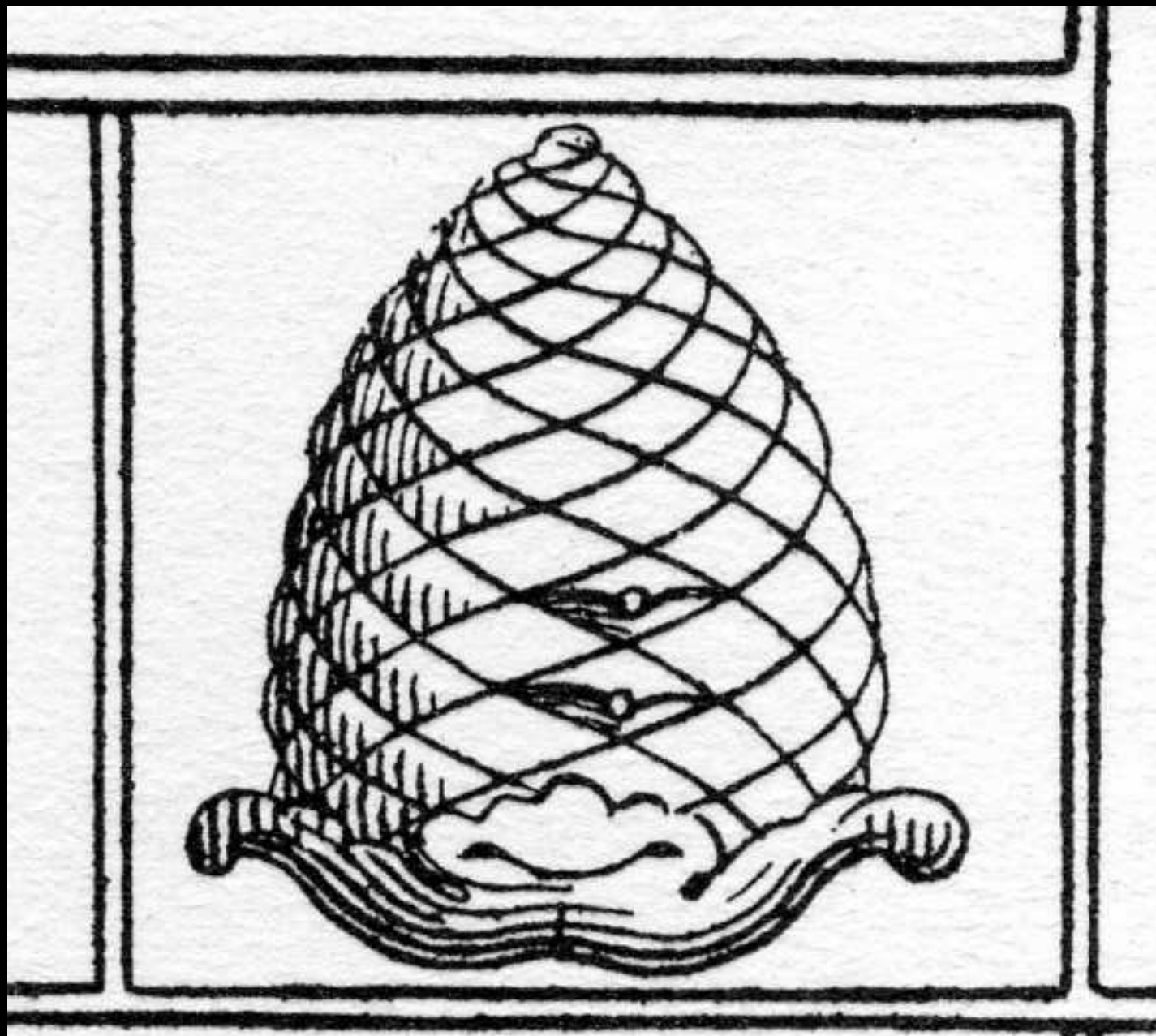






$((\uparrow \diamond p \succ \uparrow \times i e))^{71}$



















FRANCIS
DE VERULAMIO/
Summi Angliæ
CANCELLARIS/
Institutiones
regiæ.

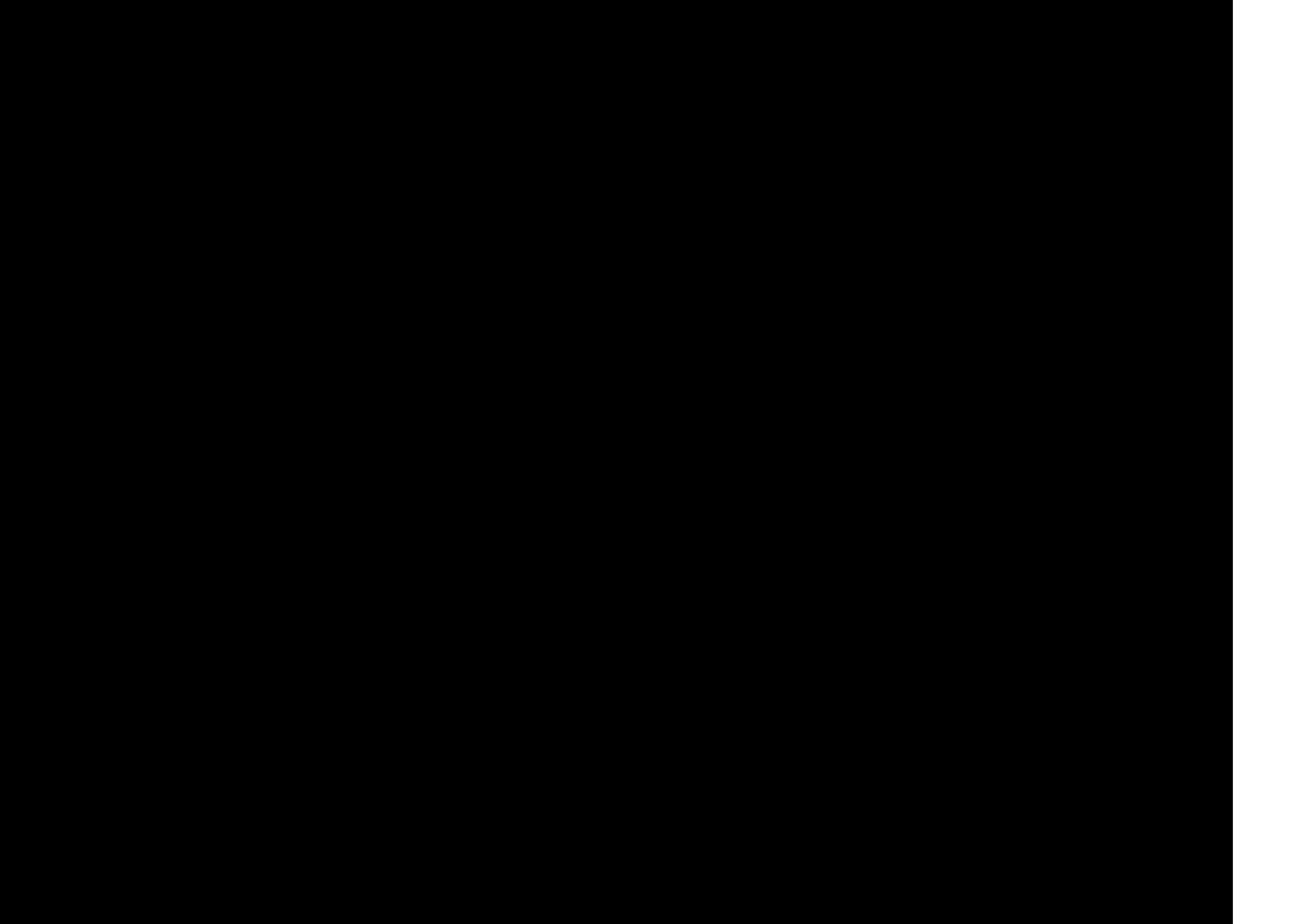


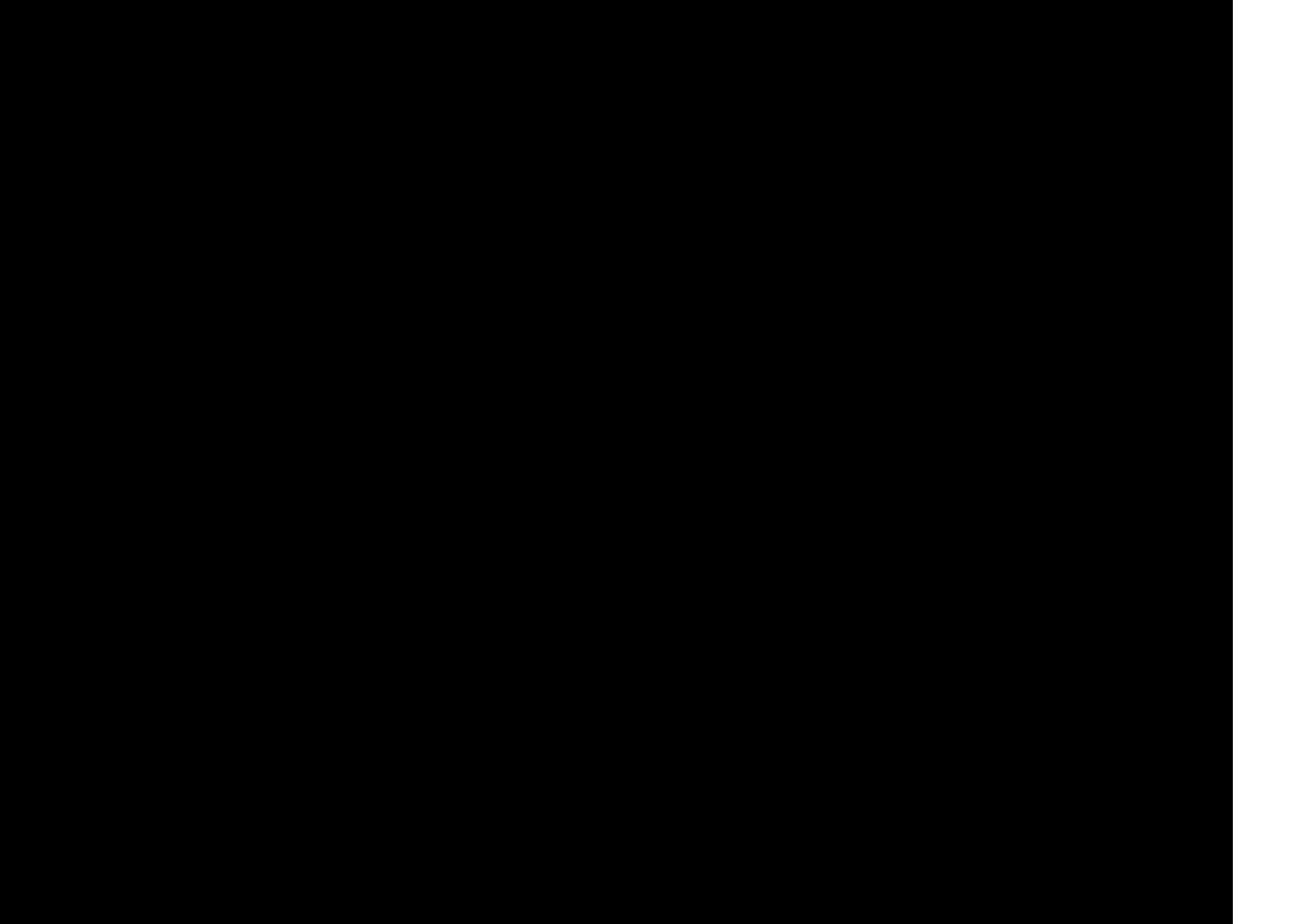
Anno

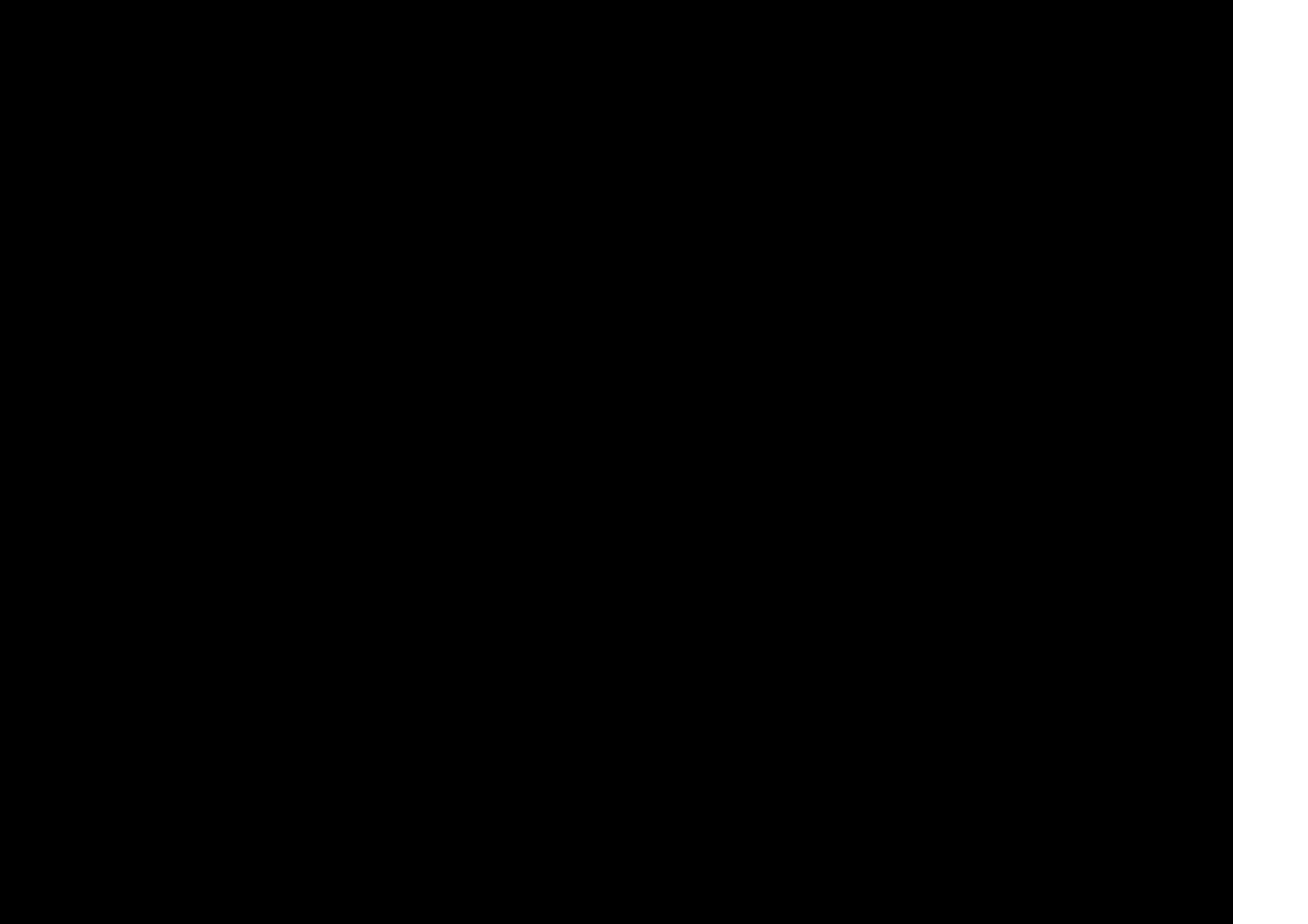
LONDINI
Johanne Hilliana
Typographica
Regia.

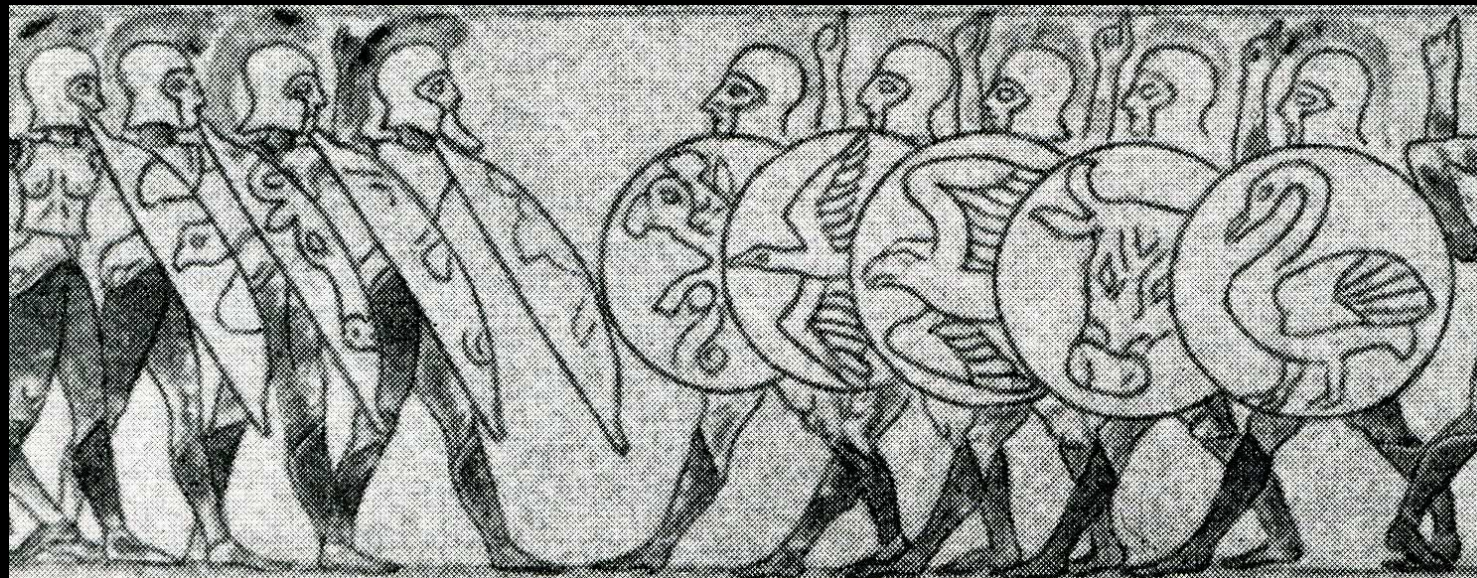
1620





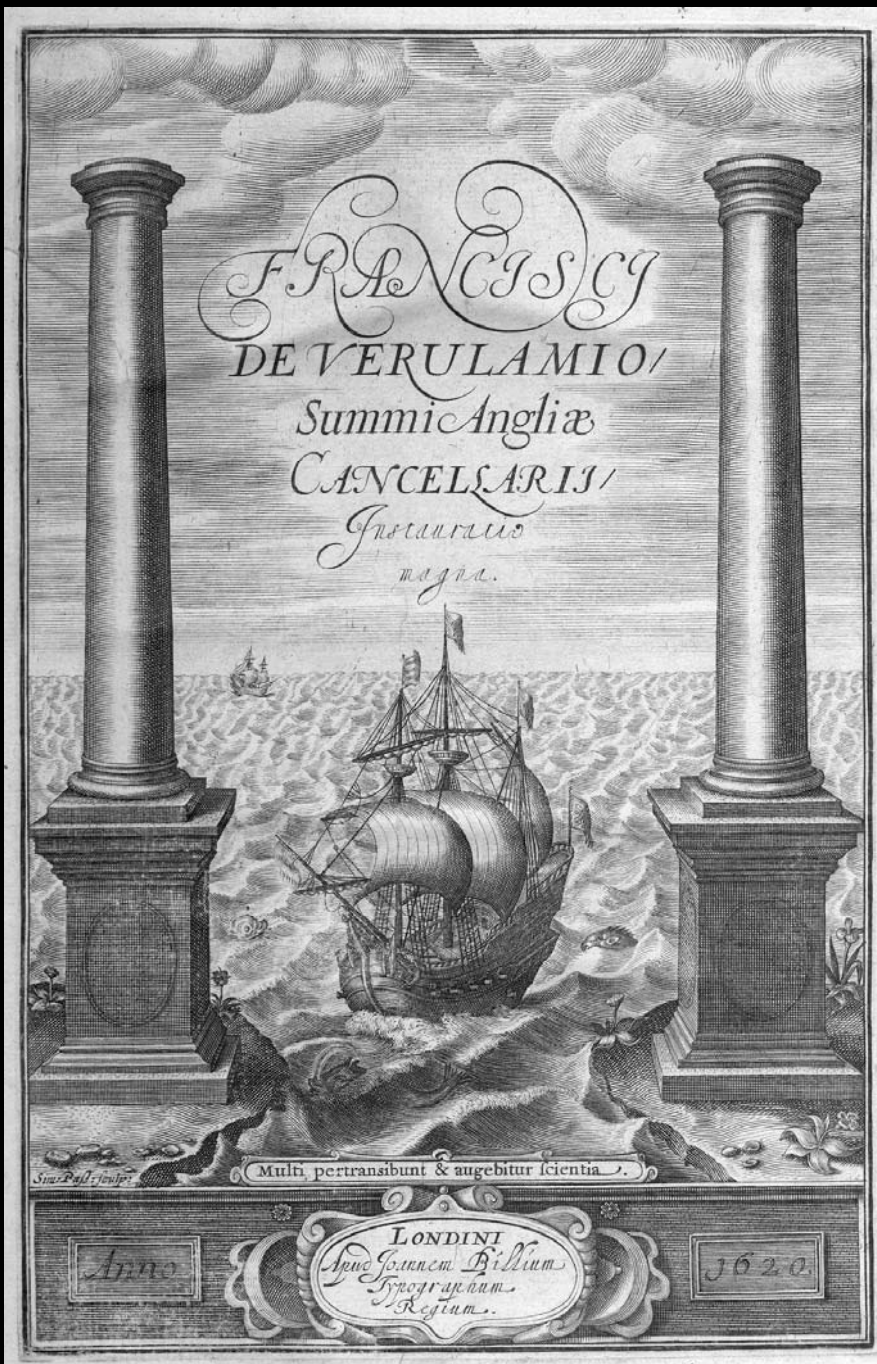












Sim. Paul. fecit.

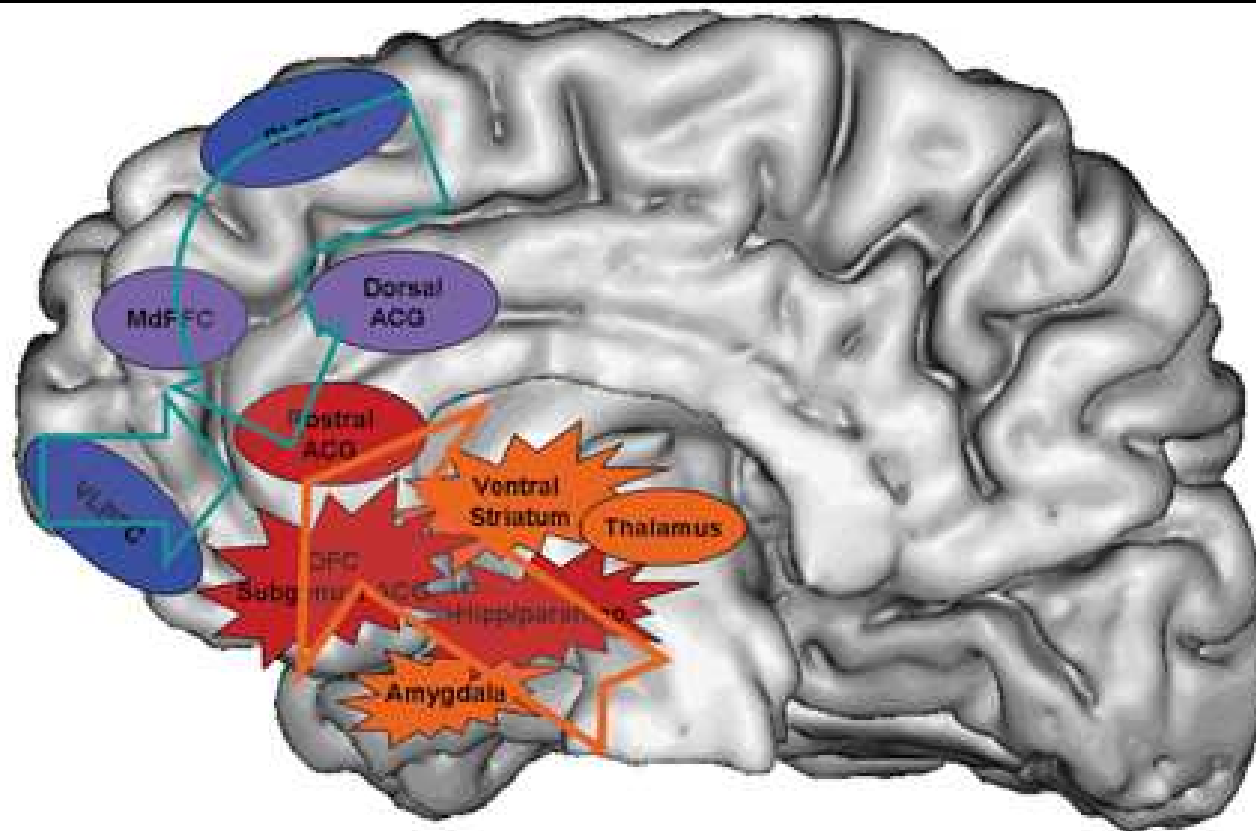
Muli pertransibunt & augebitur scientia.

Anno

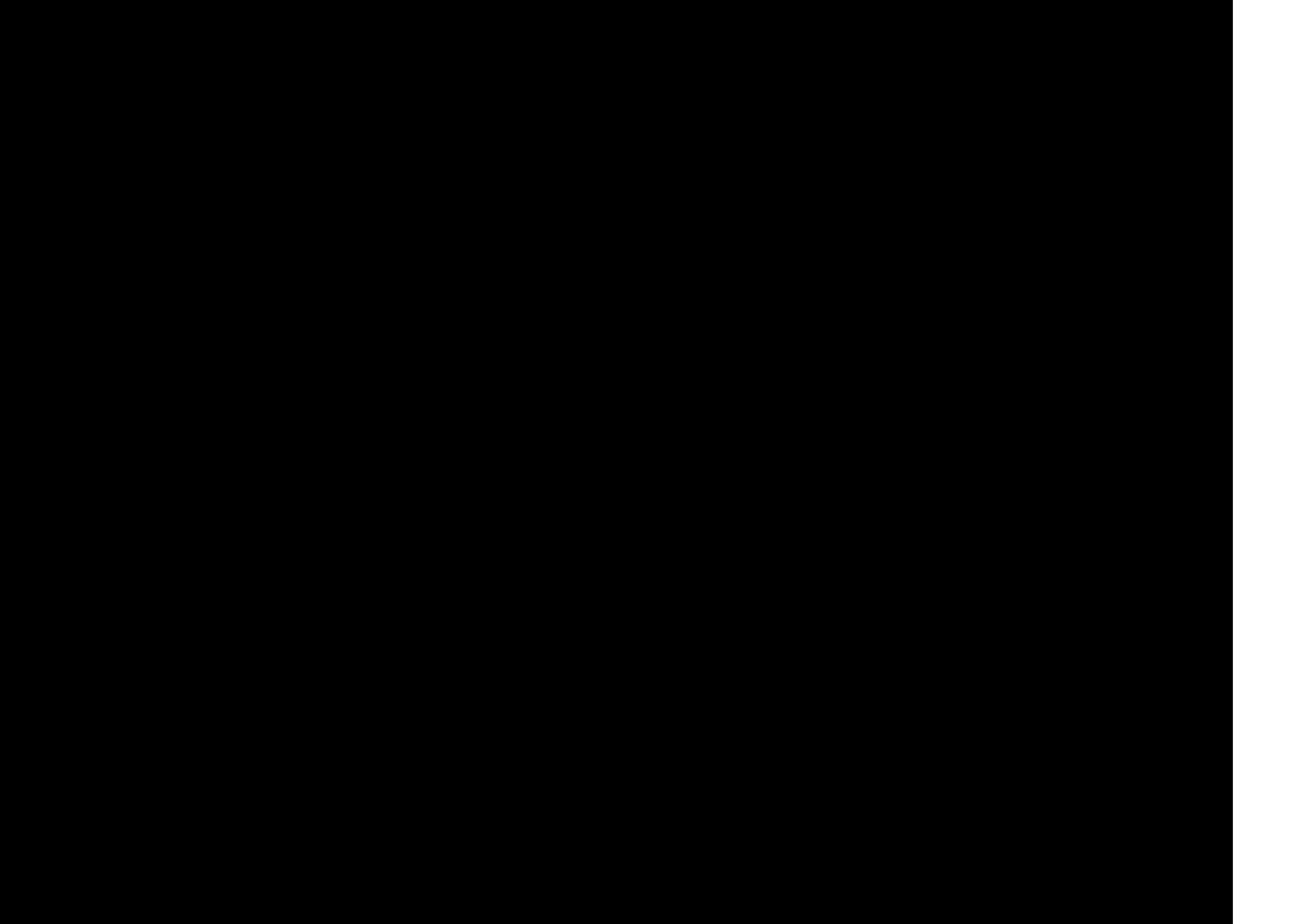
LONDINI
Johannem Billium
Synographum
Regium.

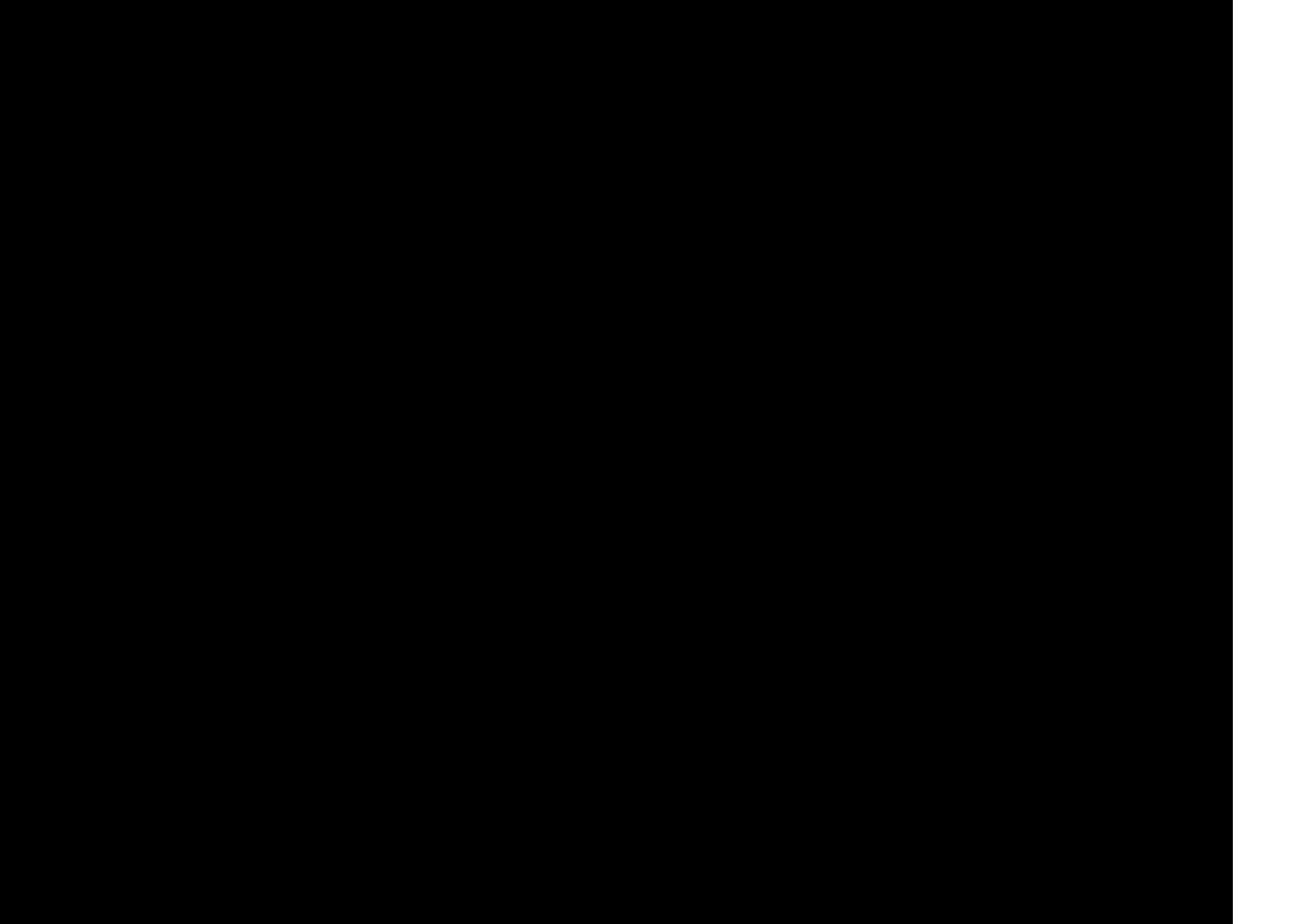
1620.

Neuroplanning: neuroscience, contemporary architecture and the historic urban context'



Orienting/Emotion Identification
 Automatic Emotion Regulation
 Voluntary Emotion Regulation
 Regions Implicated in Both Automatic
 and Voluntary Emotion Regulation







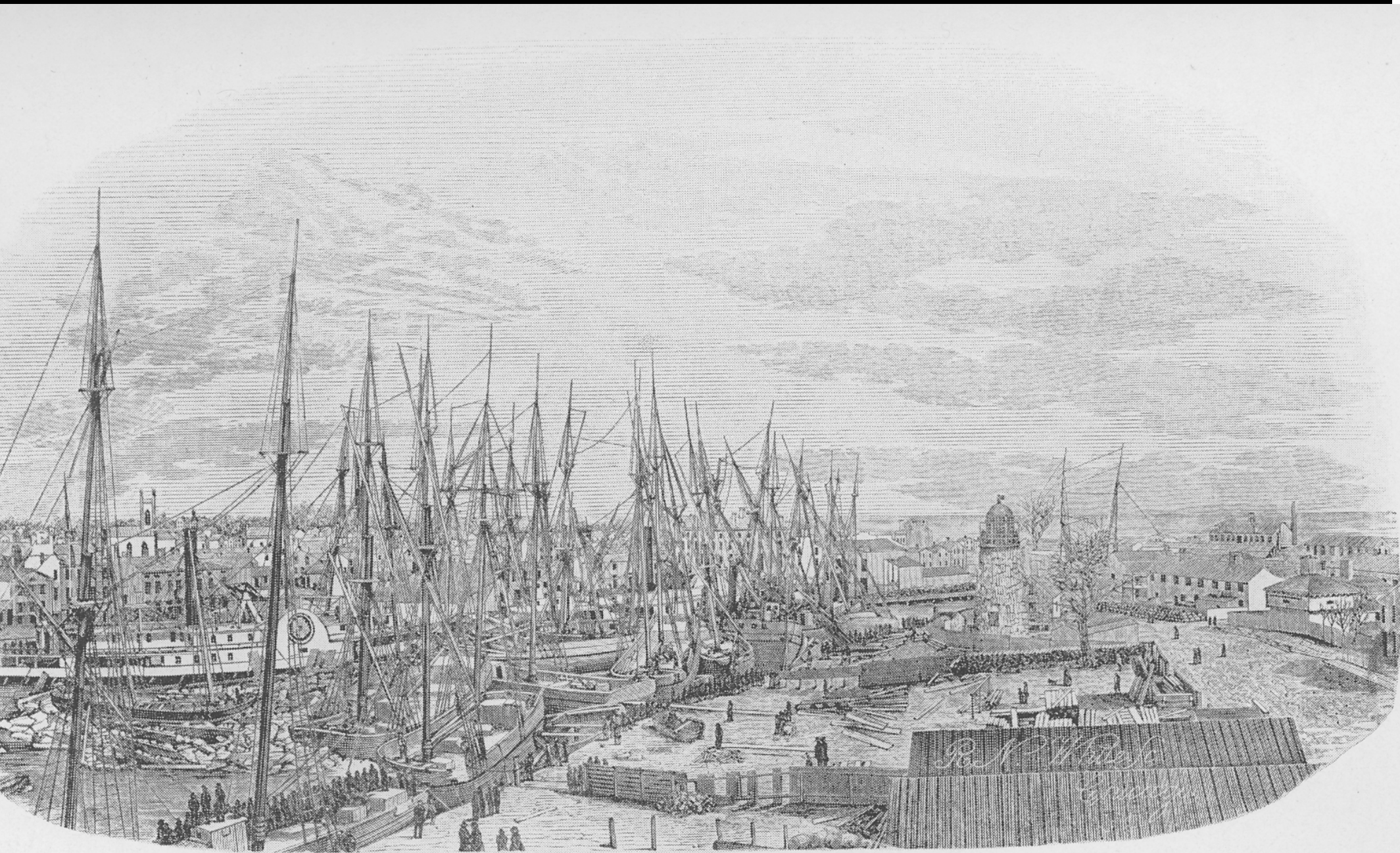
Bundesarchiv, Bild 101-185-0412-14A
Foto: Rensch / Mei 1941









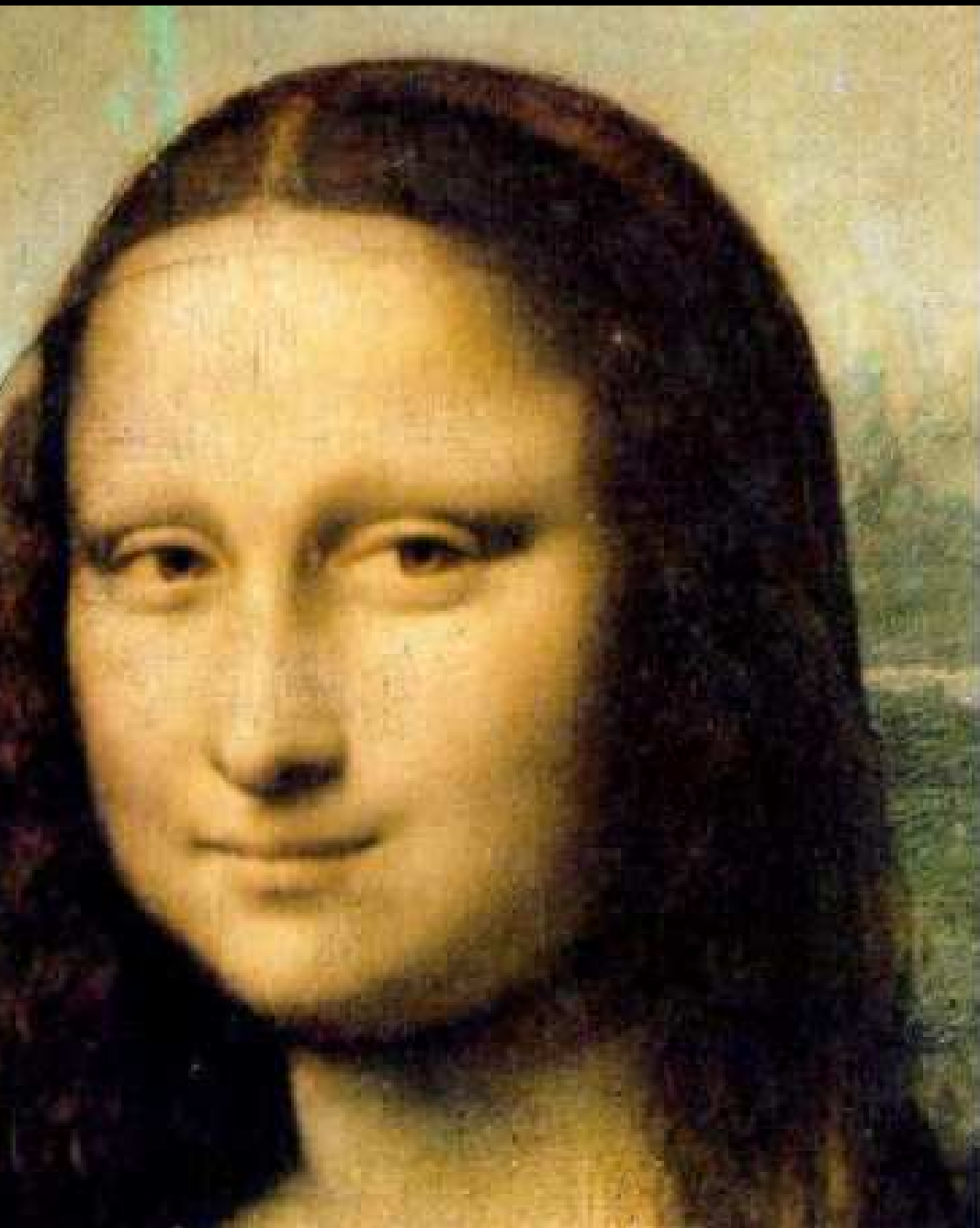


CHICAGO HARBOR, 1849













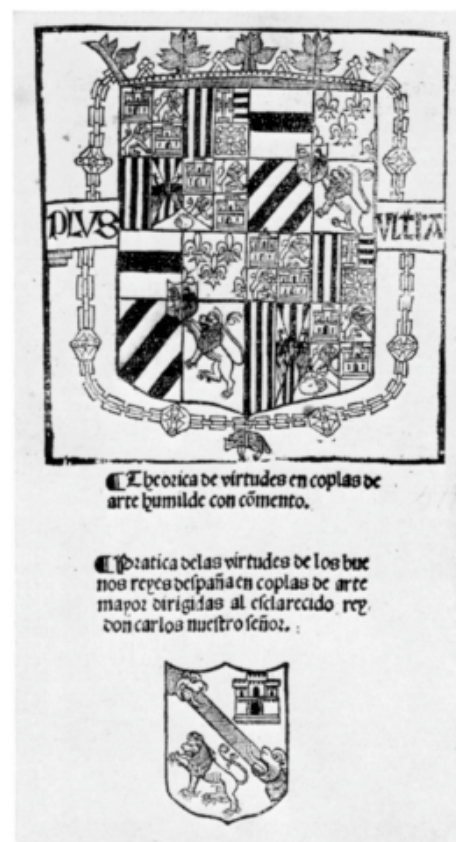


a—Device of Emperor Charles V in Ruscelli's *Imprese*, 1566 (p. 218)

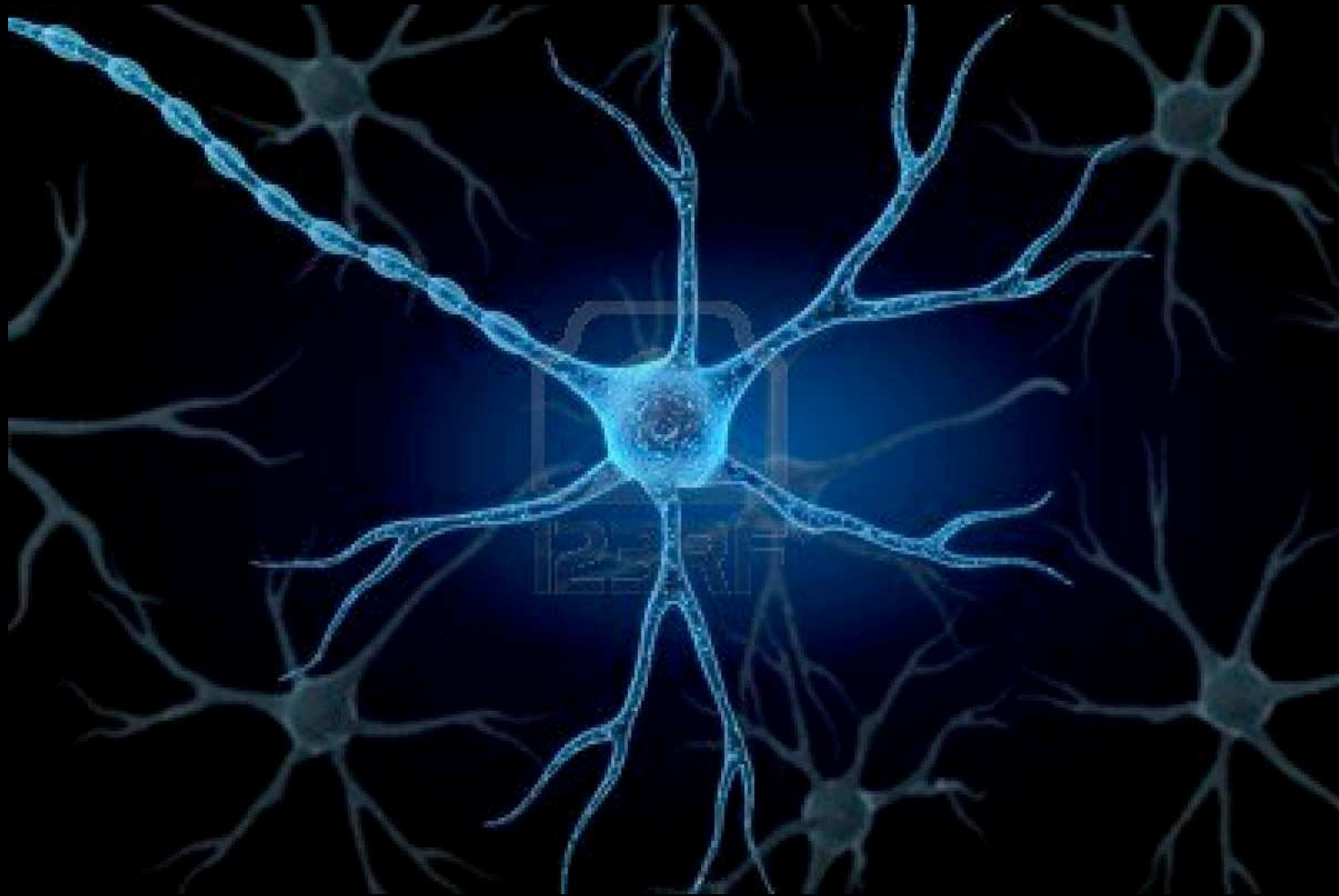


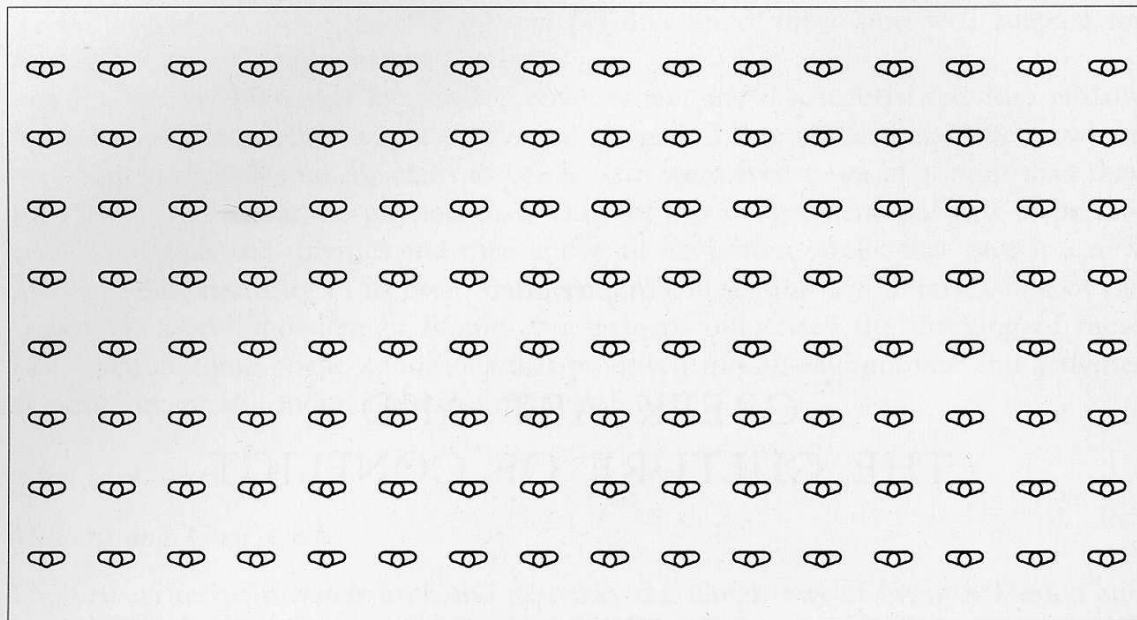
Foto Mas

b—Device of King Charles I of Spain (later Emperor Charles V), choir stalls, Barcelona, Cathedral, 1519 (p. 218)



c—Title-page, Francisco de Castilla, *Theorica*, 1518 (p. 223)





6 Scheme of the phalanx.





George Washington
the first President of the U.S.
Property of the
Library of Congress
Faintly visible text, possibly a library stamp or ownership mark.